



Review of DRAFT Sahtu Land Use Plan Zone 41 Amendment Application

Tulita June 2016

Government of
Northwest Territories

GNWT's role in the amendment

- One of three approvers (SSI, GNWT, Canada)
- Provide technical and policy advice
- Any amendment would first be approved by SSI before GNWT could consider
- The federal Minister is the last to approve
- Parties must provide written reasons if they do not approve an amendment
- The Zone 41 amendment has not yet been submitted for formal approval



GNWT Review Criteria

Consider the following:

- Northern legislation (e.g., Mackenzie Valley Resource Management Act; Sahtu Dene and Métis Comprehensive Land Claim Agreement; etc.)
- The vision and goals of the Sahtu Land Use Plan
- GNWT policy (e.g., Land Use and Sustainability Framework)
- GNWT strategic initiatives (e.g., Mineral Development Strategy)
- Other regional land use plans



GNWT Review Criteria (continued)

Considered in the context of:

- The concluded boundary decisions for Nááts'ihch'oh Park Reserve
- The consideration of the balance between conservation goals and potential economic opportunities of the Sahtu
- Political priorities
- Accuracy, clarity, readability, and ease of implementation



GNWT Review Issues

- Through the review the GNWT identified 2 issues that could prevent the GNWT from approving the Draft Amendment
 - Access to high mineral potential lands
 - Conformity Requirement #14



Issue 1: Access to high mineral potential lands

- 2007 Mineral and Energy Resource Assessment (MERA) was undertaken as part of the national park planning process
- Some lands with high potential deposits were included in the national park
- Most high mineral potential areas were left out of the final national park boundary to provide economic opportunities
- GNWT's view: areas of high economic value should be made available to provide benefits to Sahtu and NWT residents through employment, tax revenue, resource royalties (to the GNWT and Aboriginal governments/organizations), and Impact Benefit Agreements, where appropriate.



YUKON NWT

Nááts'ihch'oh National Park Reserve

O'Grady Lake

41

41

Broken Skull River

SAHTU

Nááts'ihch'oh
National
Park Reserve

South Nahanni River

41

DEHCHO

41

Little Nahanni River

Nahanni National
Park Reserve
Expansion

Howard's Pass
Access Road



Issue 2: Conformity Requirement #14

- States that values of the zone must be respected and remain substantially unaffected
- GNWT recognizes that special management zoning was selected because these areas also hold important ecological and cultural values
- GNWT is of the view that the regulatory and environmental assessment processes will ensure these values area taken into account



Zoning

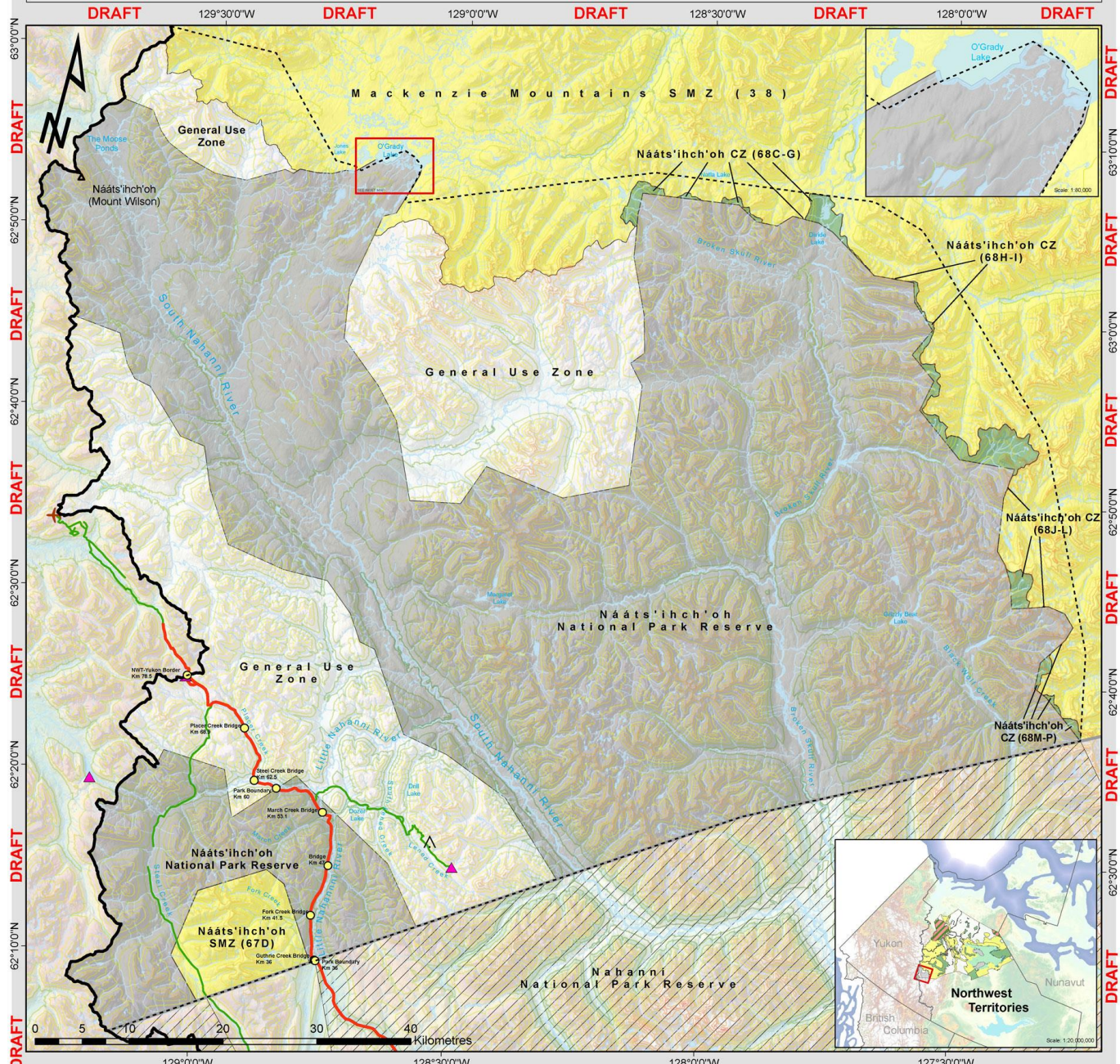
The GNWT could approve:

- Zone 38 extension
- Zone 67 (parcel D) SMZ
- Zone 68 (parcels C-P) CZ

Roadblocks for the GNWT include:

- Zone 67 (parcels A-C) SMZ
- Zone 68 (parcels A-B) CZ





Conclusion

- GNWT respects the Board's authority and jurisdiction for developing a land use plan
- Respectfully asks the Board, and signatory parties to reconsider the DRAFT amendment zoning
- GNWT will continue to work with the Board, SSI, and Canada to find a solution

