



July 15 – Tulita

July 16 – Norman Wells

July 21 – Yellowknife

## PUBLIC MEETING

Gathering Public Input for:

Amending the Sahtu Land Use Plan  
Following the Creation of the  
Nááts'ihch'oh National Park Reserve

## AGENDA



- A) Opening
  - i. Overview of agenda and event purpose
  - ii. Introductions
- B) SLUPB Staff presentations
  - I. Land Use Planning in the Sahtu
  - II. History of the park reserve development
  - III. Overview of information gathered by SLUPB (mapping presentation)
  - IV. SLUPB identified values for amendment consideration
- C) Public Comment
  - i. Discussion and recording of participant input
- D) Closing
  - i. Wrap up summary of key public issues raised
  - ii. Next steps in process

## Board Members

---

- **Heather Bourassa**, Chair (Nominated by SLUPB members)
- **Danny Bayha** (GNWT Nominee)
- **Bob Overvold** (Canada Nominee)
- **Rick Hardy** (SSI Nominee)
- Vacant (SSI Nominee)

All nominees are submitted to the Minister of Aboriginal Affairs and Northern Development Canada (AANDC). The Minister makes appointments for 3-year terms.

## Office and Staff

---

2 full-time employees:

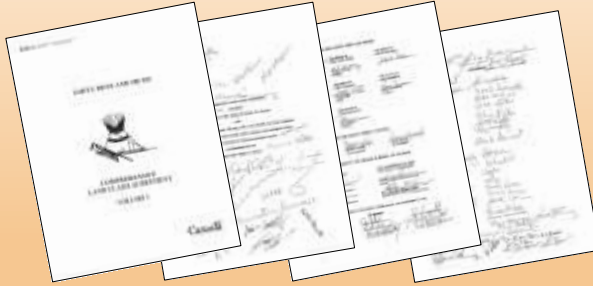
- Executive Director / Senior Land Use Planner
- GIS Analyst / Planner



Yamoga Building in Fort Good Hope

# Land Use Planning in the Sahtu

*The Mandate for Land Use Planning in the Sahtu Settlement Area comes from:*



*Sahtu Dene and Metis Comprehensive Land Claim Agreement  
(SDMCLCA)*



*Mackenzie Valley Resource Management Act  
(MVRMA)*

## Co-Management Boards in the Sahtu



Sahtu Land and Water Board



Sahtu Renewable Resources Board



Mackenzie Valley Land and Water Board



Sahtu Land Use Planning Board



Mackenzie Valley Environmental Impact Review Board

# What is a Land Use Plan

**"The purpose of land use planning is to protect and promote the social, cultural and economic well-being of residents and communities in the settlement area, having regard to the interests of all Canadians."**

It does NOT regulate traditional use or harvesting activities.



## Evolution of the Plan

2003- Preliminary Draft

2007- Draft 1

2009- Draft 2

2010- Draft 3

- Public Hearing
- 3 Technical Workshops
- Issue Paper (June 2012)
- Tri-Partite Meeting (Sept 2012)

2013- Final SLUP



# Plan Approval

Adopted by the SLUPB (April 29, 2013)

Approved:

- The Sahtu Secretariat Incorporated (July 4, 2013)
- GNWT – Minister of ENR\* (July 25, 2013)
- Canada – Minister of AANDC (August 8, 2013)

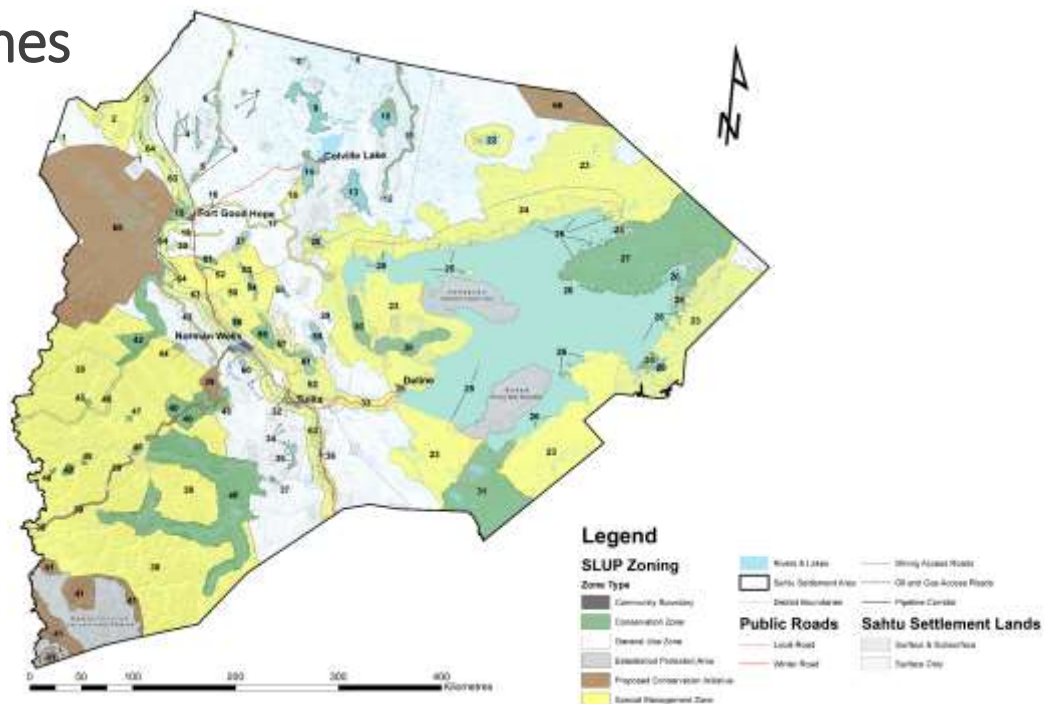
Effective:

## August 8, 2013



\*Following Devolution, GNWT Minister of Lands is now the GNWT approval party.

## SLUP Zones



## Monitoring and Implementation

Following approval the SLUPB's core functions as mandated by the MVRMA:

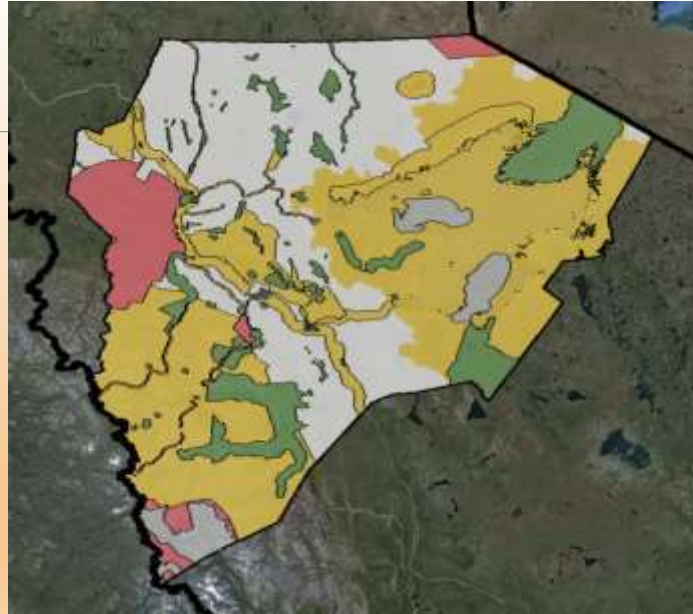
- Consider Exceptions the SLUP (S. 44)
- Trans-boundary Planning (S. 45)
- Conduct Conformity Determinations on Referral (S. 47)
- **Consider Amendments to the SLUP (S. 48)**
- Conduct Planning Activities leading towards 5-Year Review (S. 50)



## Recent Activities

- Communicate the SLUP to Planning Partners
- Exceptions/Conformity Determinations (when applications/referrals are received)
- Adopted Rules of Procedure (October 2014)
- GIS data collection and SLUP Zoning Shapefile maintenance
- Redesigned Website (November 2014)
- **Preparations for SLUP Amendment process (Nááts'ihch'oh National Park Reserve)**





## Creation of the Nááts'ihch'oh National Park Reserve

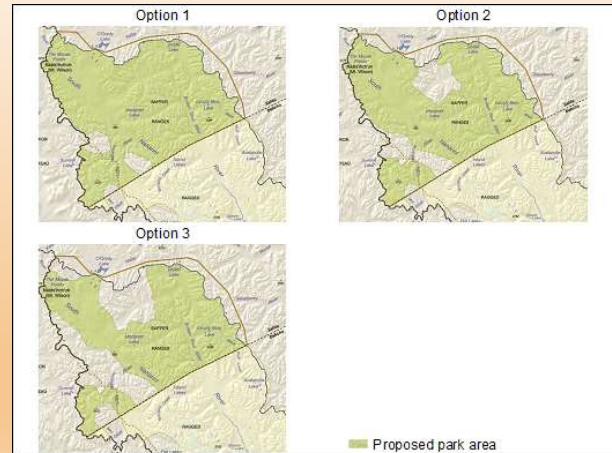


2003	SLUP Preliminary Draft 1 identifies area as Nahanni River Headwaters Conservation Area/ Begadeh
2006	UNESCO World Heritage Committee recommended that the entire South Nahanni watershed be protected
June 2007	National park reserve was first proposed by PCA, to land corporations that represent the Dene and Metis of Tulita and Norman Wells
Nov. 2007	Tulita District elders chose the name Nááts'ihch'oh meaning: "pointed like a porcupine quill."
2007	The Greater Nahanni Ecosystem MERA 2 study released
Feb. 2008	Initial Interim Land Withdrawal
May 2009	SLUP Draft 2 - Nááts'ihch'oh Proposed Conservation Initiative
July 2010	SLUP Draft 3 - Nááts'ihch'oh Proposed Conservation Initiative



# Creation of the Nááts'ihch'oh National Park Reserve

- Nov 2009 Senior MERA Committee developed and approved three (3) park reserve boundaries.
- 2010 PCA conducted a consultation program to gather input on boundary option.
- 70% of respondents supported protection of the entire South Nahanni Watershed.
  - Only 65 of the 1,603 respondents expressed a preference for one of the three options, sixty supporting Option 1, three supported Option 2, and two supported Option 3.



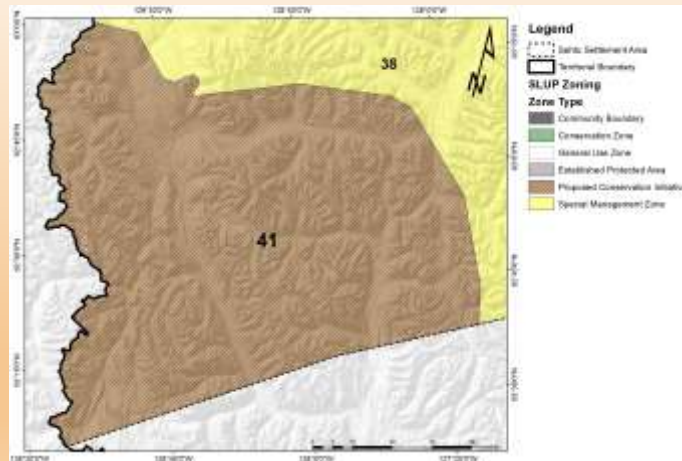
# Creation of the Nááts'ihch'oh National Park Reserve

- March 2012 Impact and Benefits Plan signed
- Aug. 2012 Park reserve announced by the Prime Minister
- Sept. 2012 SLUP Tri-Partite meeting
- April 29 2013 SLUP adopted by SLUPB
- July- Aug. 2013 SLUP approved by SSI, GNWT, and AANDC
- Aug. 8, 2013 SLUP comes into effect
- May 2014 Bill S-5 introduced to amend the *Canada National Parks Act* (Nááts'ihch'oh National Park Reserve of Canada)
- Dec. 16, 2014 Bill S-5 receives Royal Assent bringing Nááts'ihch'oh National Park Reserve under legislation.



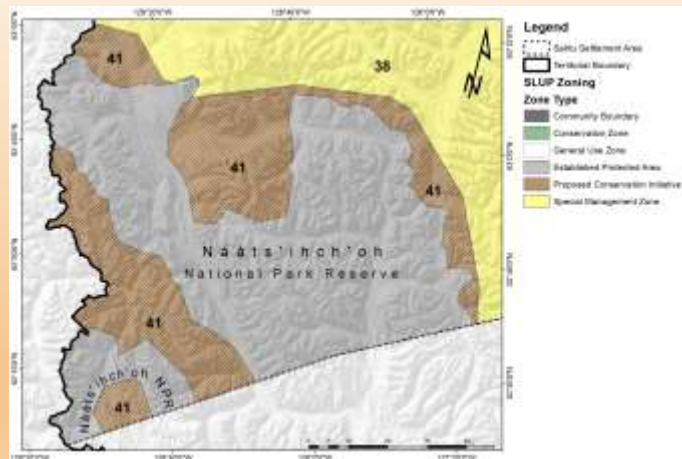
# Sahtu Land Use Plan Zoning

Timeframe: August 8, 2013 – December 16, 2014



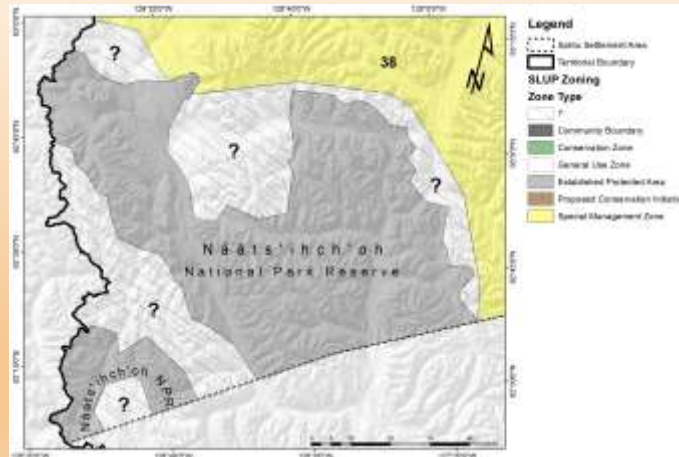
# Sahtu Land Use Plan Zoning

Timeframe: December 16, 2014 - ?



# Sahtu Land Use Plan Zoning

Timeframe: Future



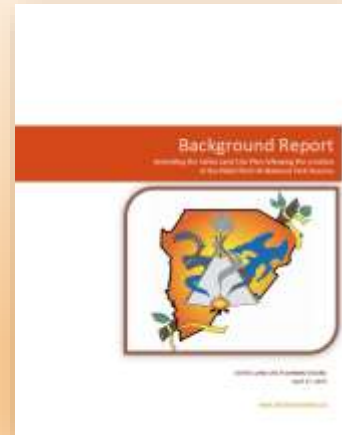
## Process



## 7 Written Comments Received

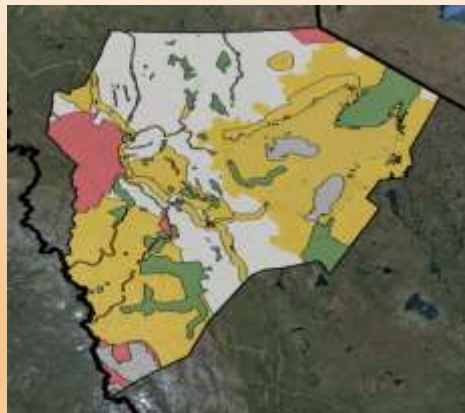
---

- Wildlife Conservation Society Canada
- Canadian Parks and Wilderness Society
- Parks Canada Agency
- NWT & Nunavut Chamber of Mines
- Aboriginal Affairs and Northern Development Canada
- Government of the Northwest Territories- Lands
- Sahtu Renewable Resources Board



## Map Presentation

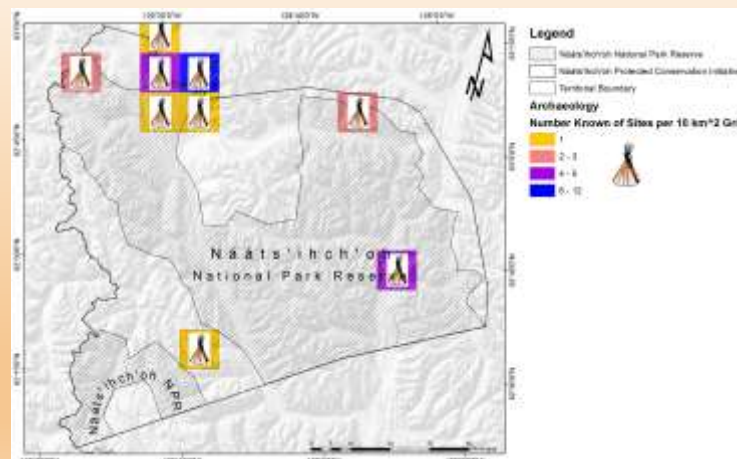
---



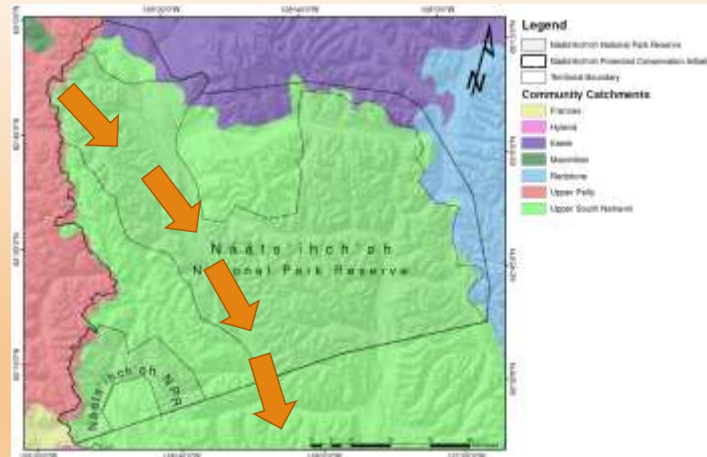
## Values for Consideration

- Archaeological, Burial and Special Cultural Sites
- Watershed Protection
- Ecological Features
- Wildlife Habitat
- Mineral Resource Potential
- Tourism and Outfitting
- Infrastructure Development

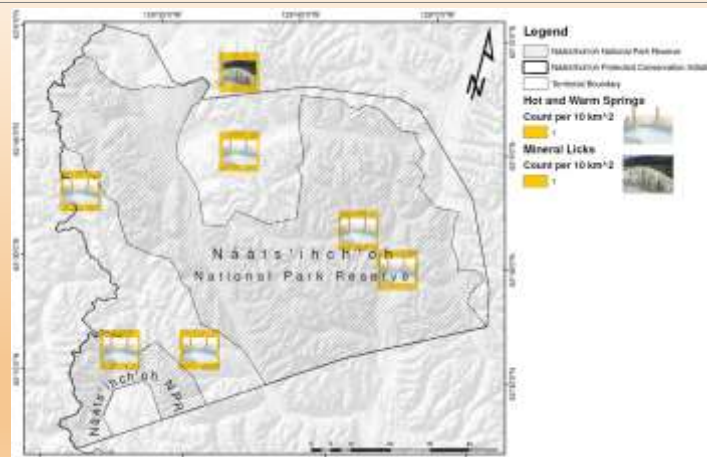
## Archaeological, Burial and Special Cultural Sites



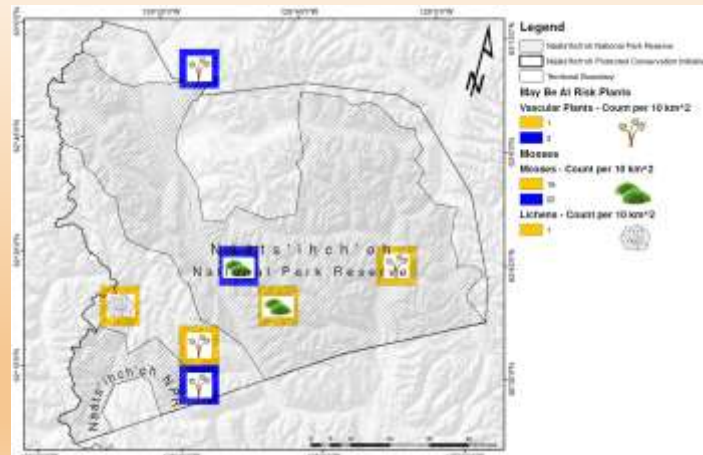
## Watersheds



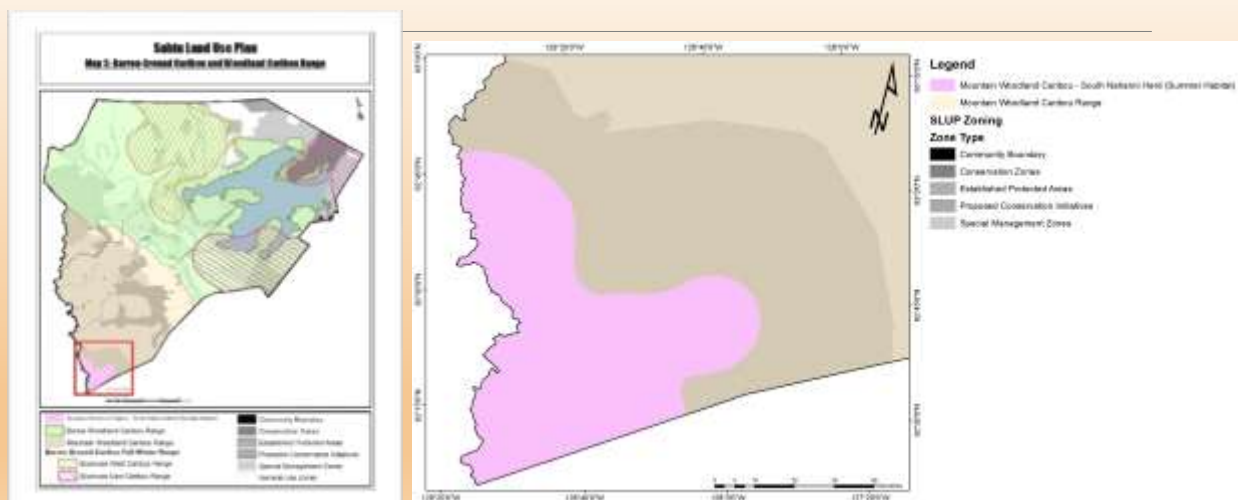
## Hot and Warm Springs and Mineral Licks



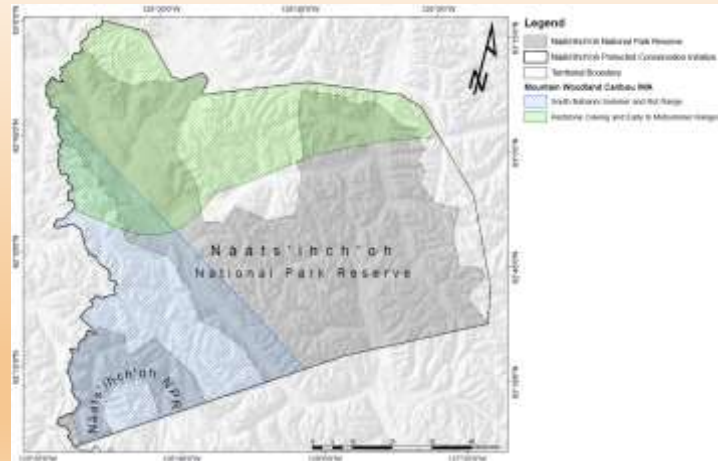
## May Be At Risk Plants



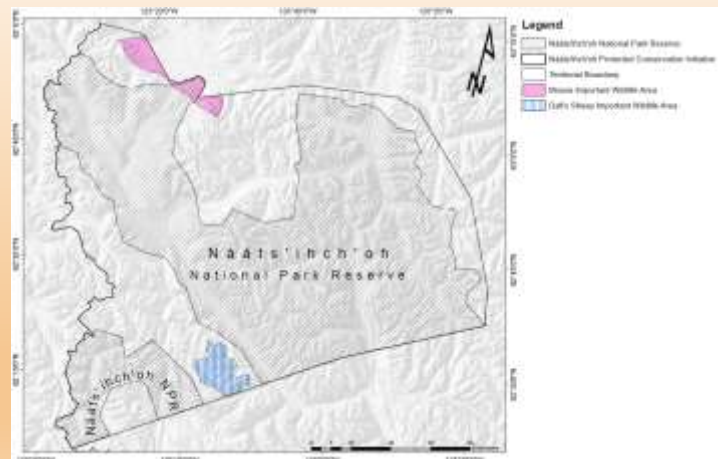
## Mountain Woodland Caribou



## Mountain Woodland Caribou

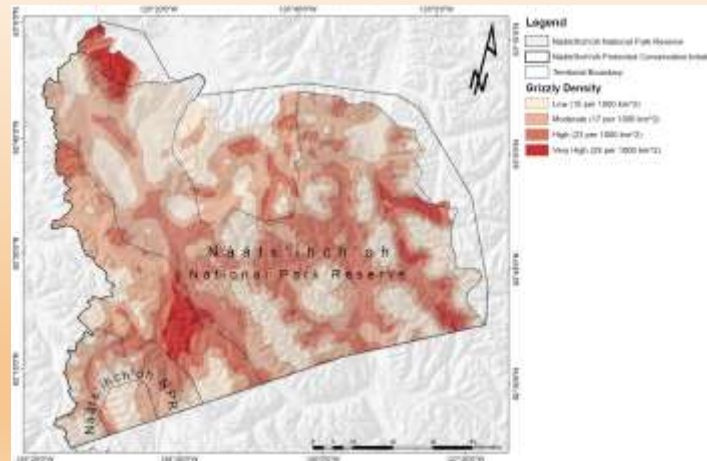


## Moose and Dall's Sheep

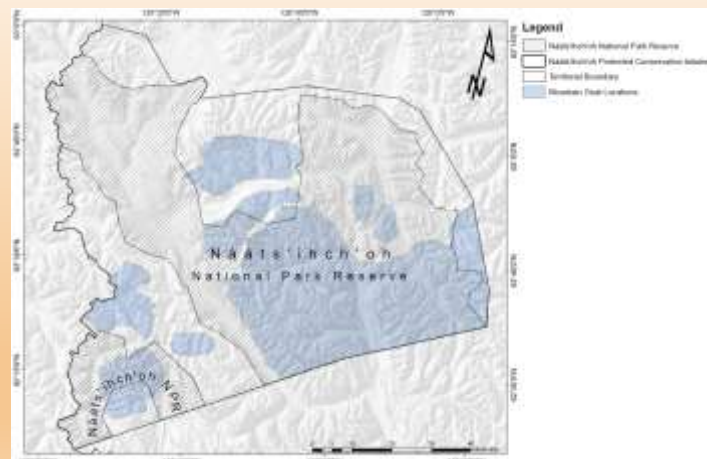




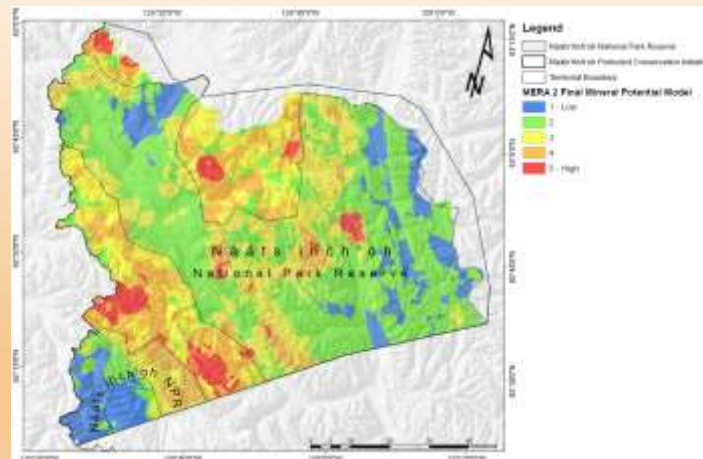
## Grizzly Bear



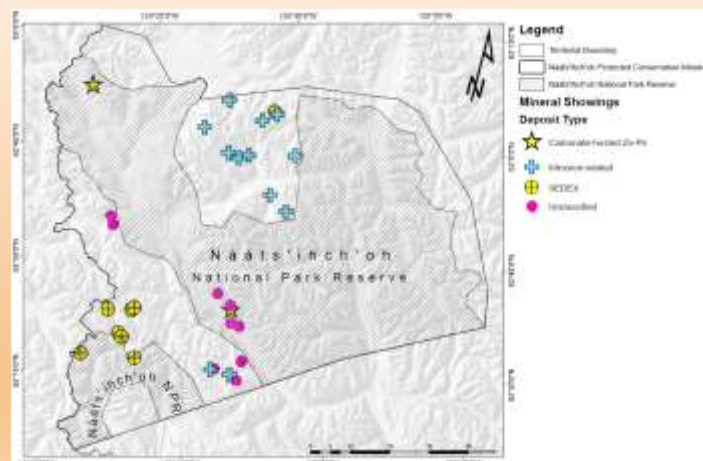
## Mountain Goat Habitat



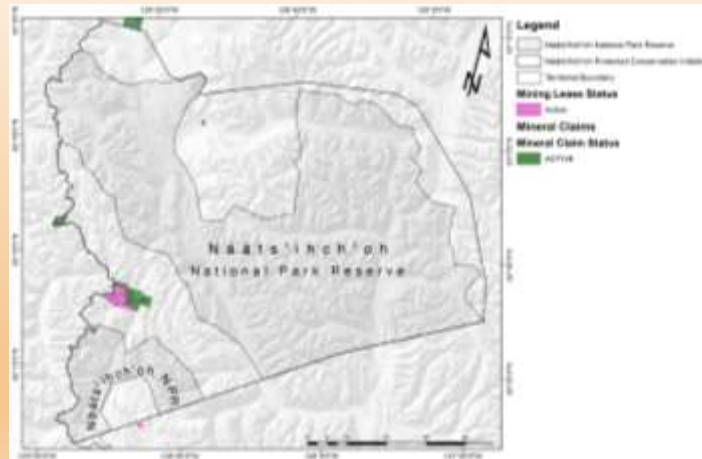
## Mineral and Energy Resource Assessment 2 (MERA)



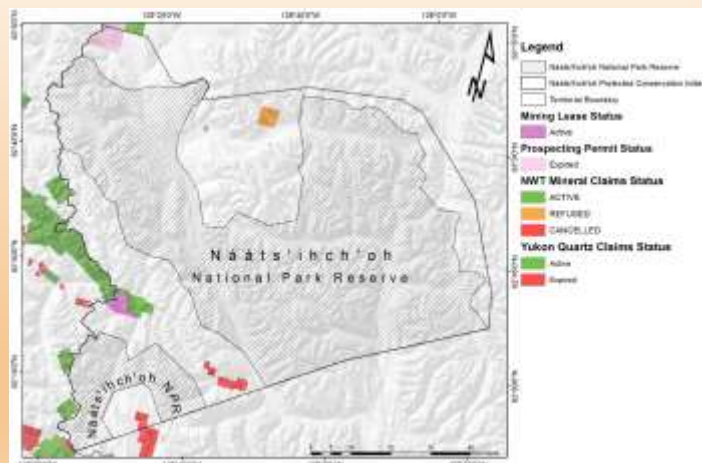
## Mineral Showings



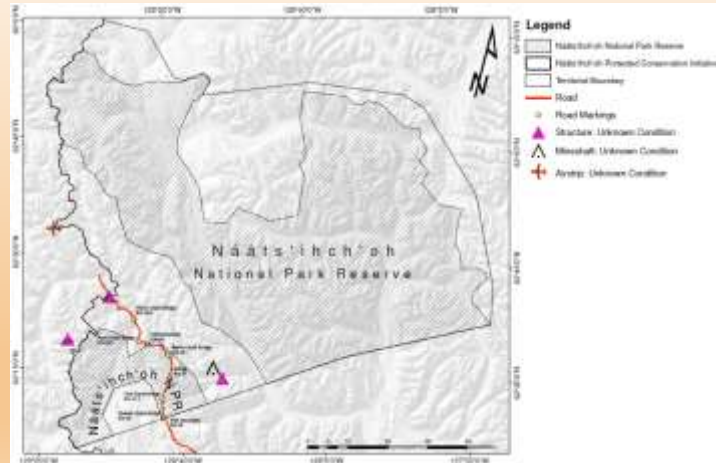
## Active NWT Mineral Claims and Mining Leases



## NWT and Yukon Mineral Tenure Data (Active/Cancelled)



## Infrastructure



## Tourism and Outfitting

### The Newest National Park Reserve

- Canada's 44<sup>th</sup> national park
- 4,895 square kilometres in size
- 14<sup>th</sup> largest national park in Canada



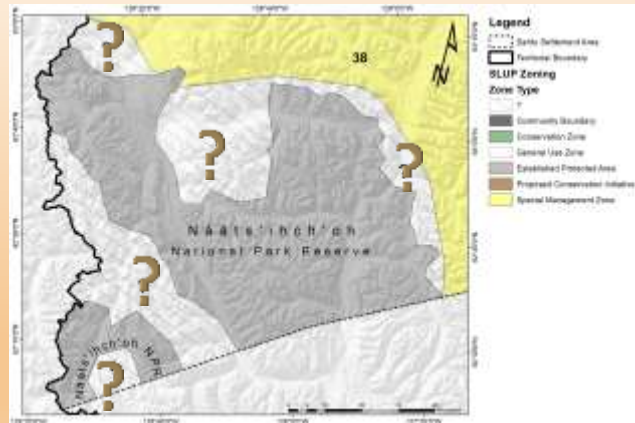
What would you like to see in...

5 years

25 years

100 years

???????



MAHSI



[www.sahtulanduseplan.org](http://www.sahtulanduseplan.org)