



June 16, 2016

Tulita

PUBLIC MEETING

Gathering Public Input for:

Amending the Sahtu Land Use Plan
Following the Creation of the
Nááts'ihch'oh National Park Reserve

AGENDA



- I. Welcome and Introductions
- II. Overview of the Sahtu Land Use Plan
- III. Review of the Nááts'ihch'oh Amendment Process
- IV. Presentation of SLUPB Proposed Zoning
- V. Presentation of GNWT Proposed Zoning (GNWT)
- VI. Facilitated Discussion
- VII. Closing remarks

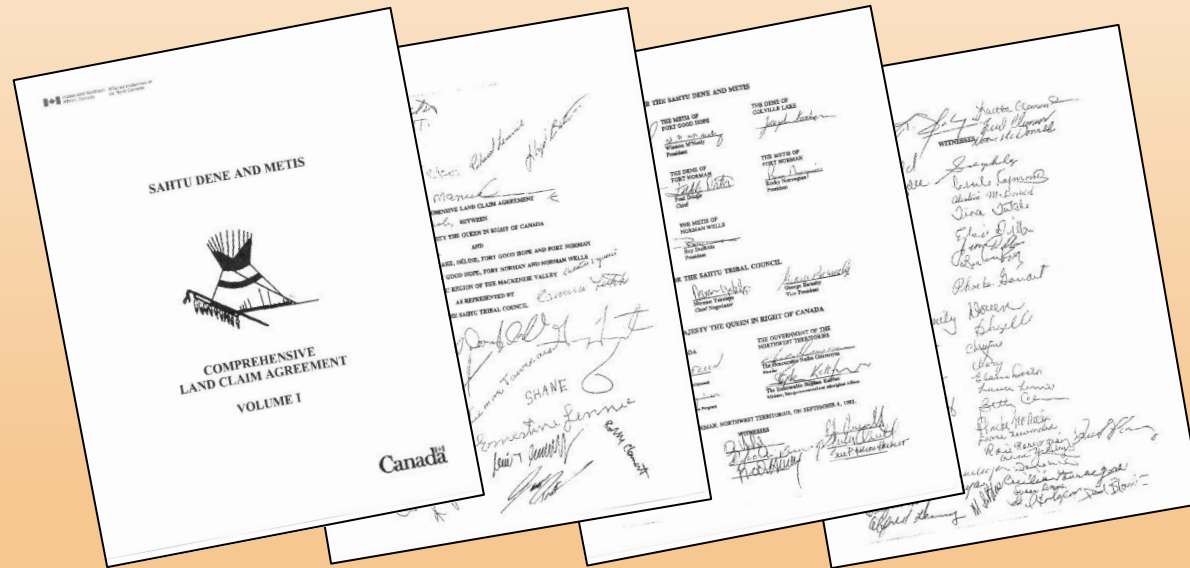
Board Members

- **Heather Bourassa, Chair** (Nominated by SLUPB members)
- **Danny Bayha** (GNWT Nominee)
- **Bob Overvold** (Canada Nominee)
- **Rick Hardy** (SSI Nominee)
- **Vacant** (SSI Nominee)

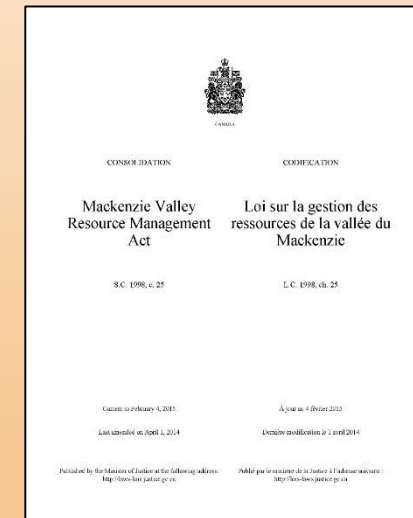
All nominees are submitted to the Minister of Aboriginal Affairs and Northern Development Canada (AANDC). The Minister makes appointments for 3-year terms.

Land Use Planning in the Sahtu

The Mandate for Land Use Planning in the Sahtu Settlement Area comes from:



*Sahtu Dene and Metis Comprehensive Land Claim Agreement
(SDMCLCA)*



*Mackenzie Valley Resource Management Act
(MVRMA)*

Sahtu Land Use Plan Approval

Adopted by the SLUPB (April 29, 2013)

Approved:

- The Sahtu Secretariat Incorporated (July 4, 2013)
- GNWT – Minister of ENR* (July 25, 2013)
- Canada – Minister of AANDC (August 8, 2013)

Effective:

August 8, 2013

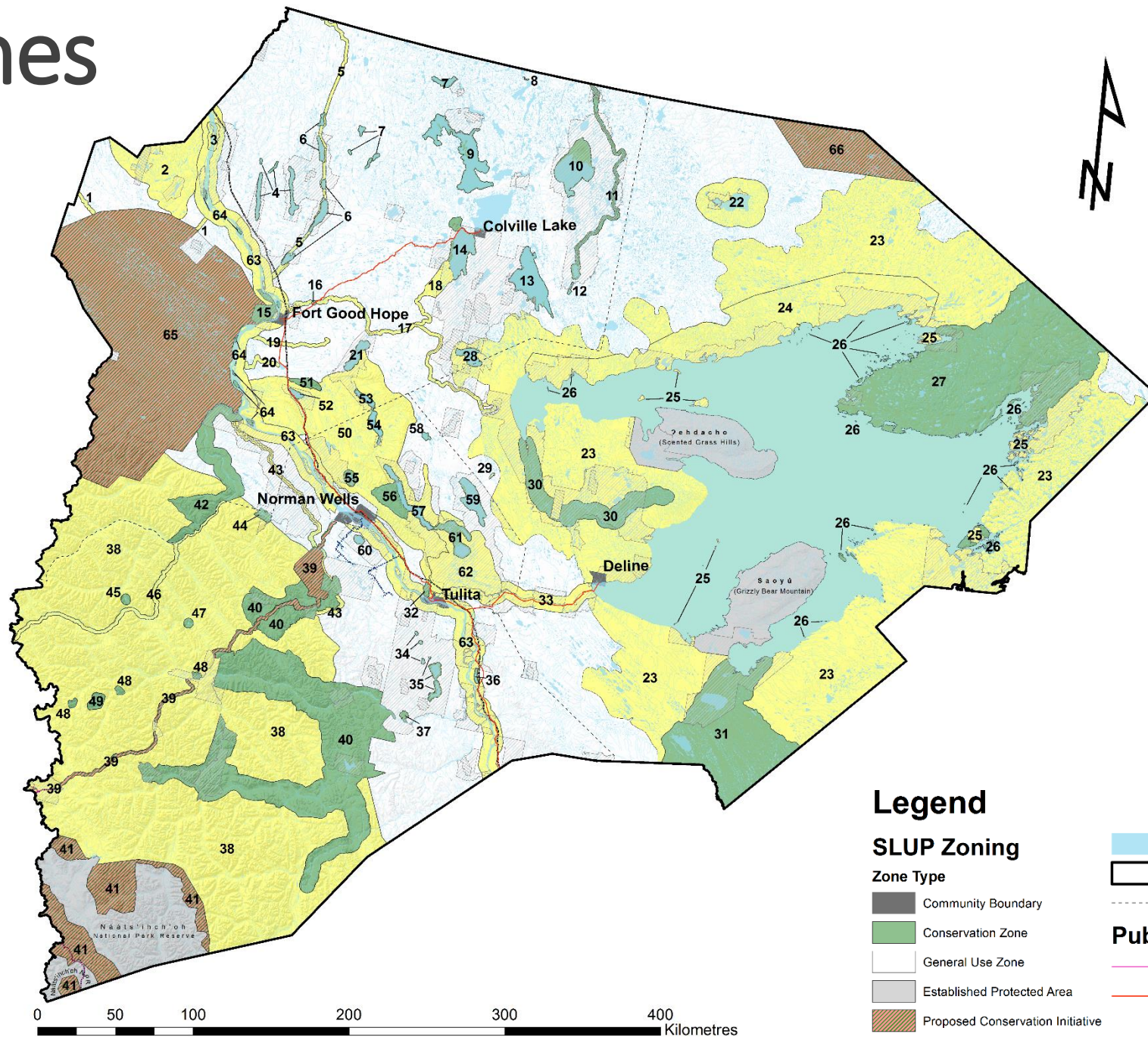
*Following Devolution, GNWT Minister of Lands is now the GNWT approval party.



Overview of the SLUP

ZONING

SLUP Zones



SLUP Zoning



General Use Zone- Subject to general Conformity Requirements 1-13.



Special Management Zone- Subject to general Conformity Requirements 1-13 and applicable special management Conformity Requirements 14-19.



Conservation Zone- Subject to general Conformity Requirements 1-13 and applicable special management Conformity Requirements 14-19.



Protected Conservation Initiative- Same status as Conservation Zones until protected under other legislation.



Established Protected Area- The Sahtu Land Use Plan does not apply to these areas.

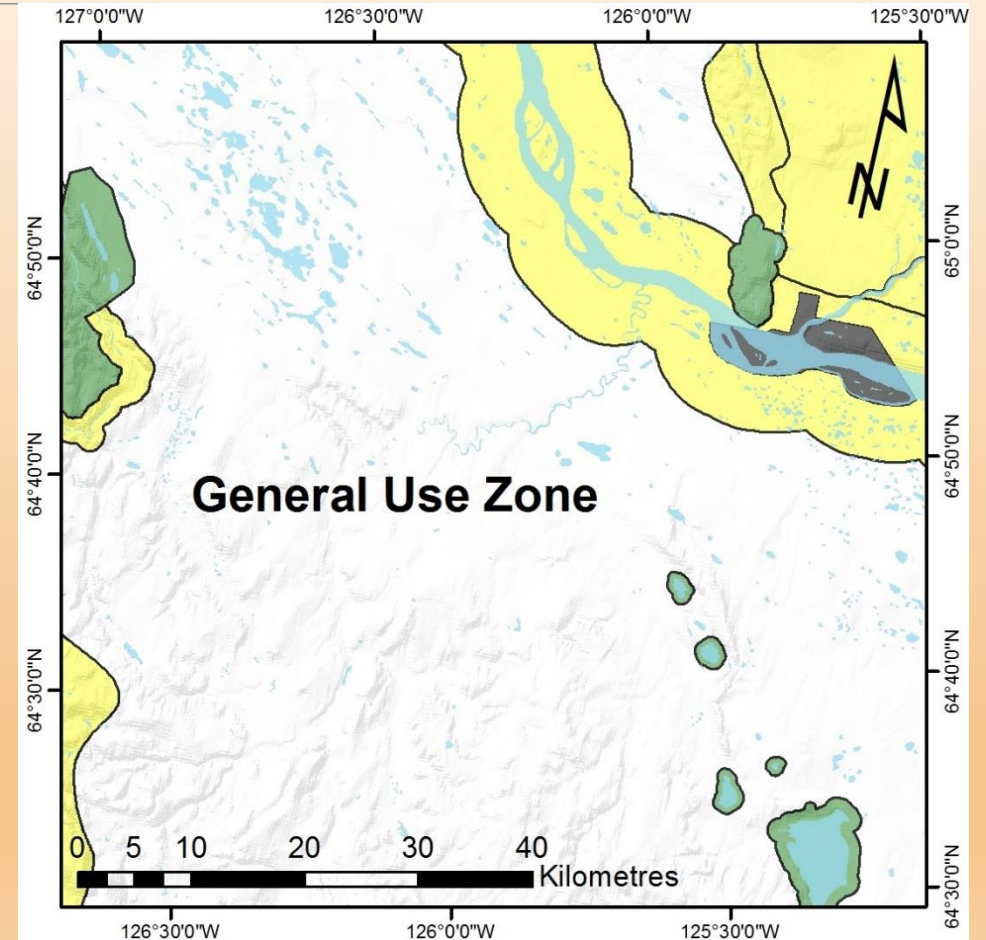
General Use Zones (GUZ)

Allow all land use except bulk water removal, subject to:

- General Conformity Requirements outlined in the Plan (CR 1-13).

Permitted Uses:

- Mining Exploration and Development
- Oil and Gas Exploration and Development
- Power Development
- Forestry
- Quarrying



Special Management Zones (SMZ)

Allow all land use except bulk water removal, subject to:

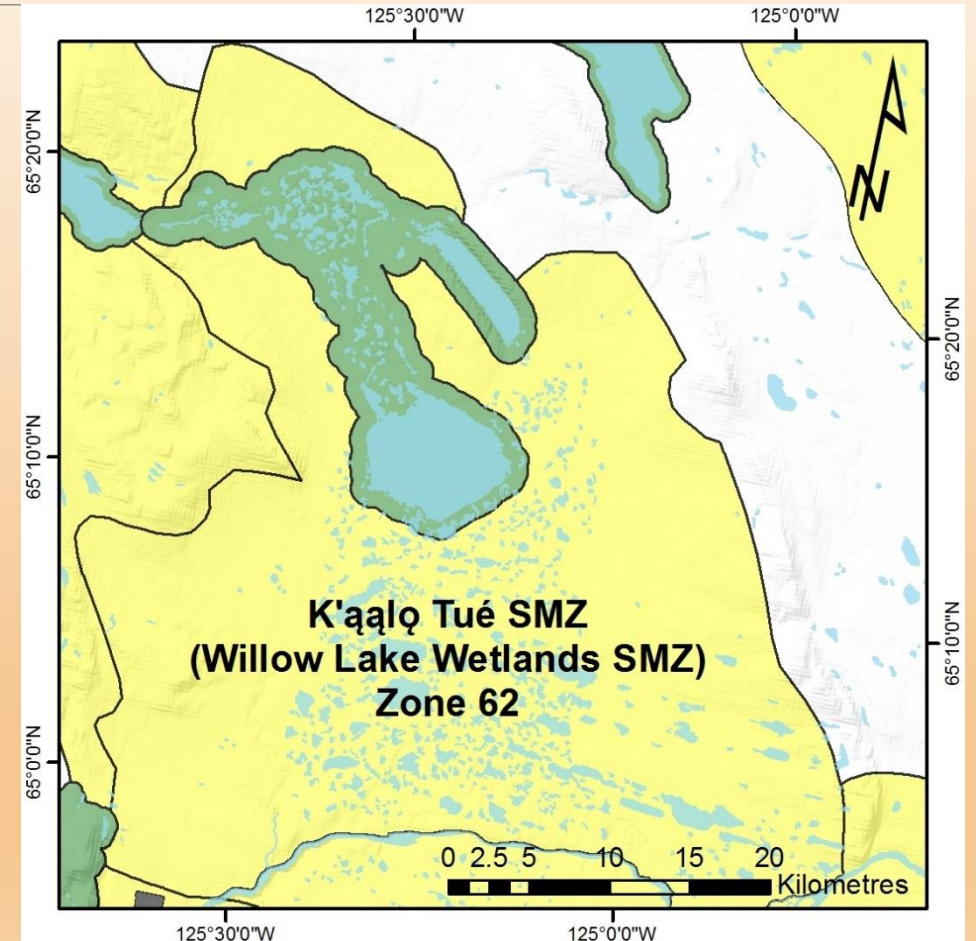
- General Conformity Requirements outlined in the Plan (CR 1-13);
- Applicable Special Management Conformity Requirements (CR 14-19).

Identified Values to be:

- Protected;
- Respected;
- Taken into account.

Permitted Uses:

- Mining Exploration and Development;
- Oil and Gas Exploration and Development;
- Power Development;
- Forestry;
- Quarrying.



Conservation Zones (CZ)

These are areas with significant traditional, cultural, heritage and ecological areas, with protection of special values.

Permitted land uses are subject to:

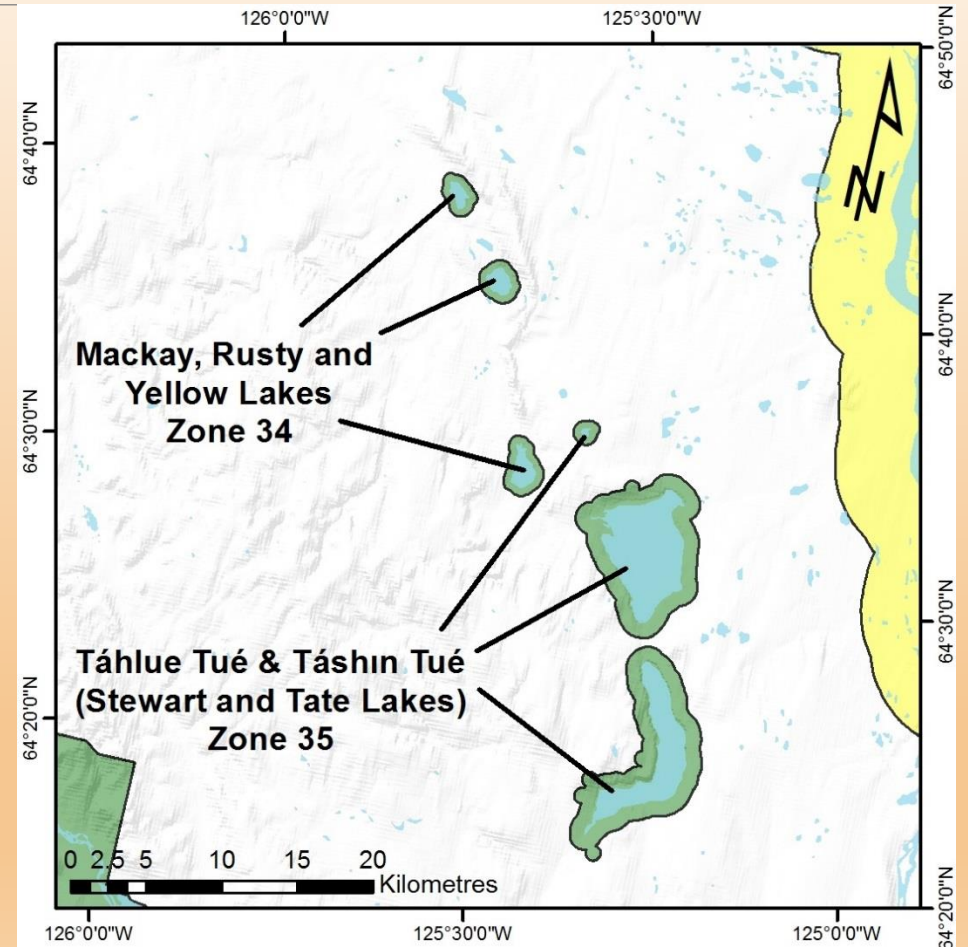
- General Conformity Requirements outlined in the Plan (CR 1-13);
- Applicable Special Management Conformity Requirements (CR 14-19).

Identified Values to be:

- Protected;
- Respected;
- Taken into account.

Prohibited Uses:

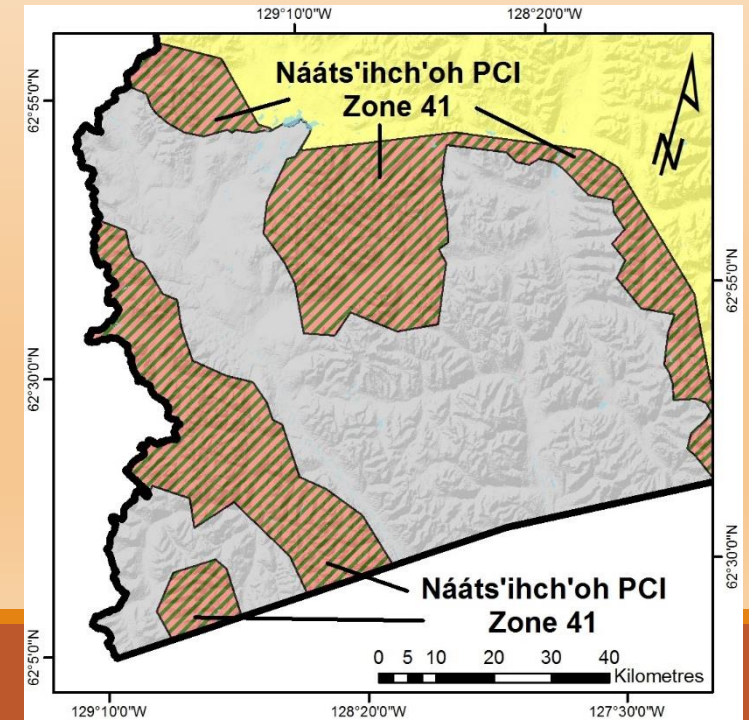
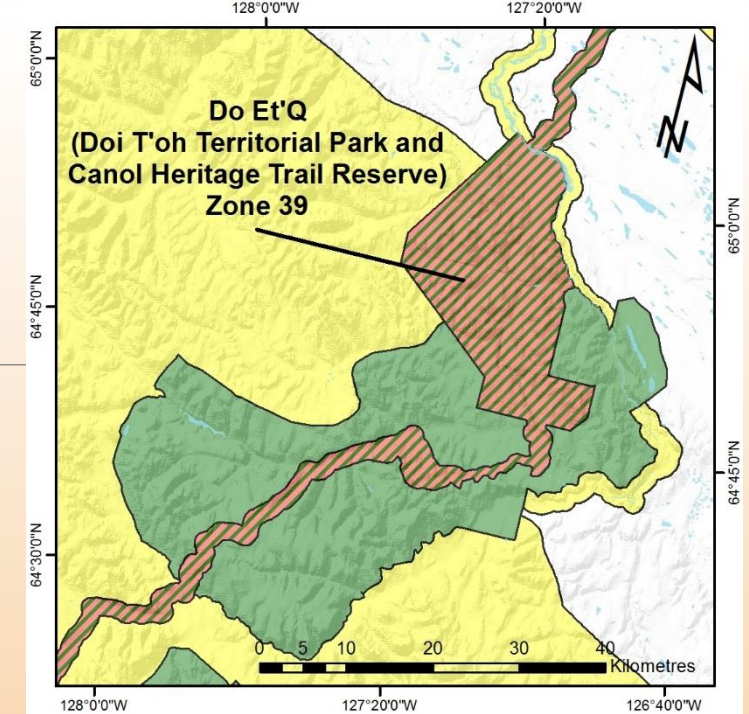
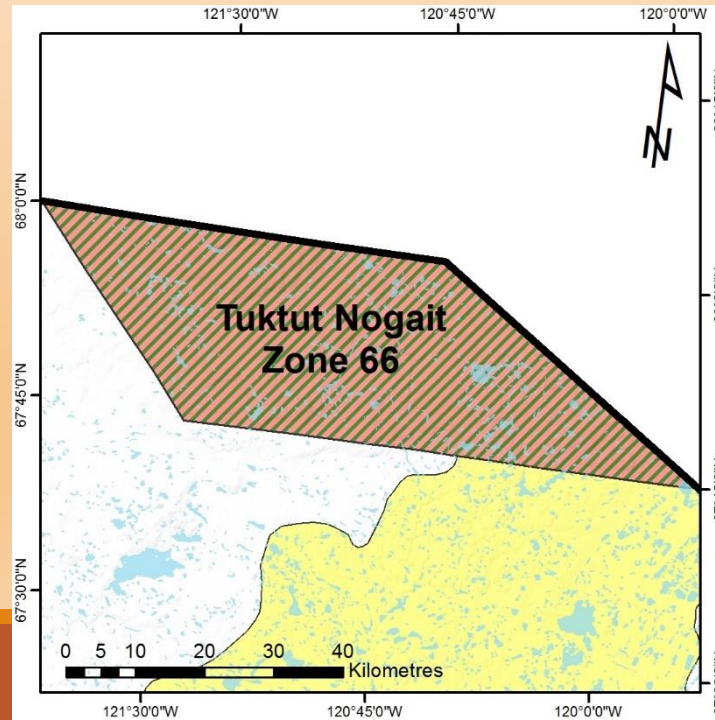
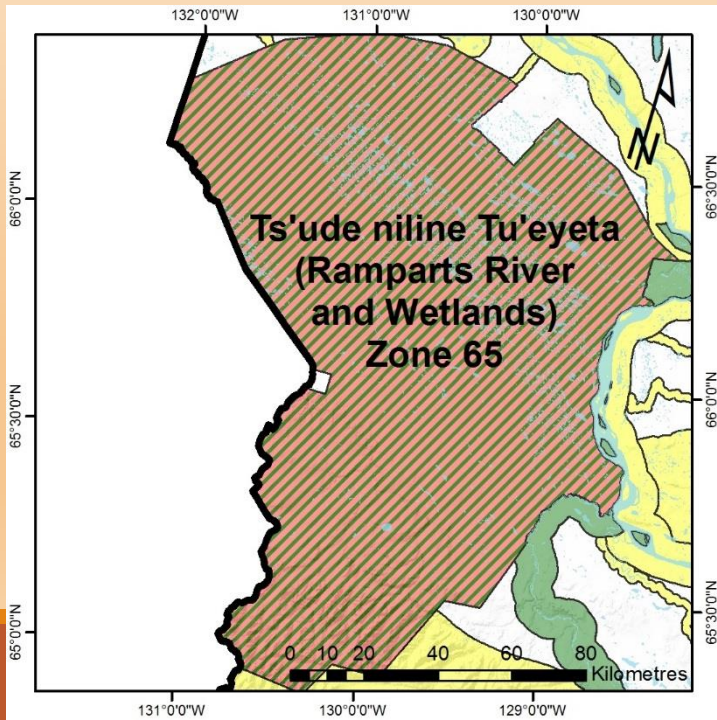
- Mining Exploration and Development;
- Oil and Gas Exploration and Development;
- Power Development;
- Forestry;
- Quarrying.



Proposed Conservation Initiative (PCI)

Areas for which **formal legislated protection** is being sought through the **Protected Areas Strategy**.

PCIs have the same status as Conservation Zones until they are protected under other legislation.

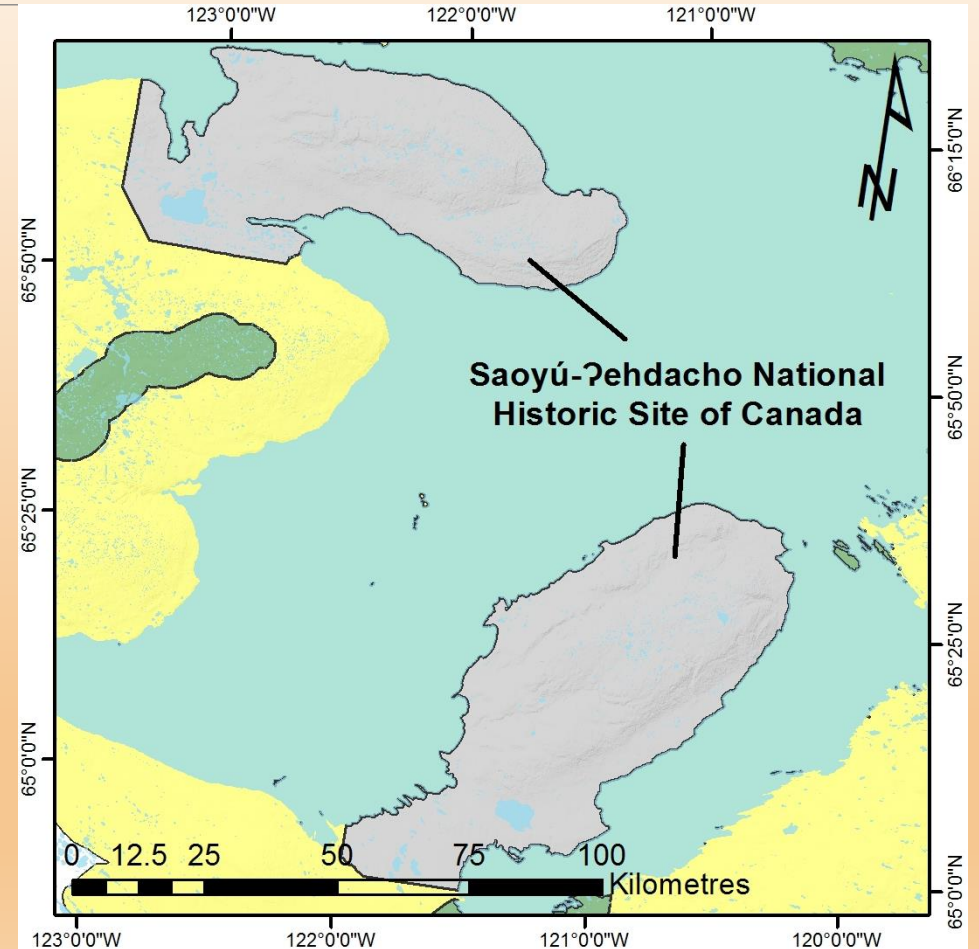


Established Protected Areas (EPA)

Designation given to all legislated protected areas once they are fully established.

The Sahtu Land Use Plan does not apply to Established Protected Areas;

- Managed according to their sponsoring legislation and management plans (where applicable).



SLUP Zoning



General Use Zone- Subject to general Conformity Requirements 1-13.



Special Management Zone- Subject to general Conformity Requirements 1-13 and applicable special management Conformity Requirements 14-19.



Conservation Zone- Subject to general Conformity Requirements 1-13 and applicable special management Conformity Requirements 14-19.



Protected Conservation Initiative- Same status as Conservation Zones until protected under other legislation.

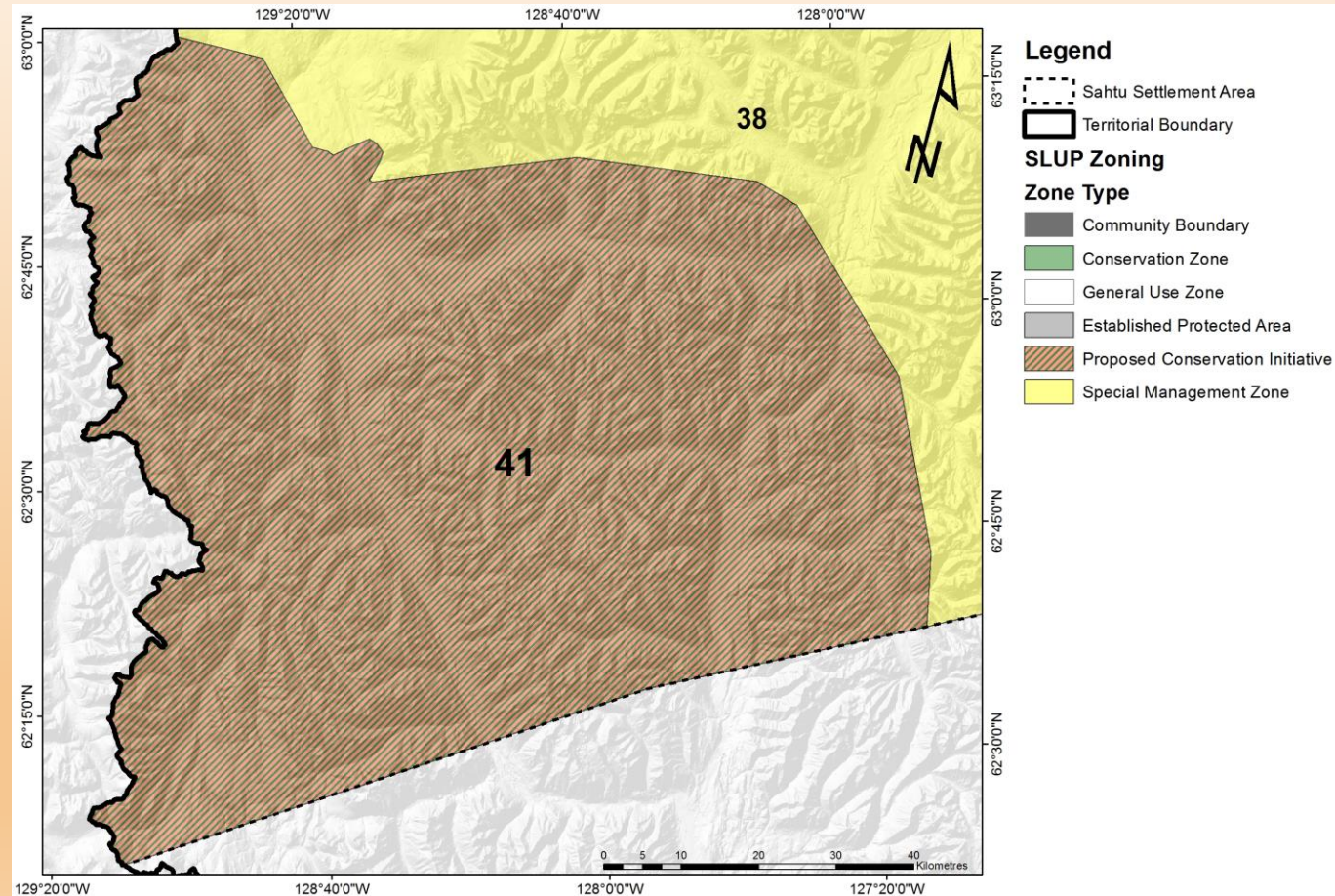


Established Protected Area- The Sahtu Land Use Plan does not apply to these areas.

Review of the Nááts'ihch'oh Amendment Process

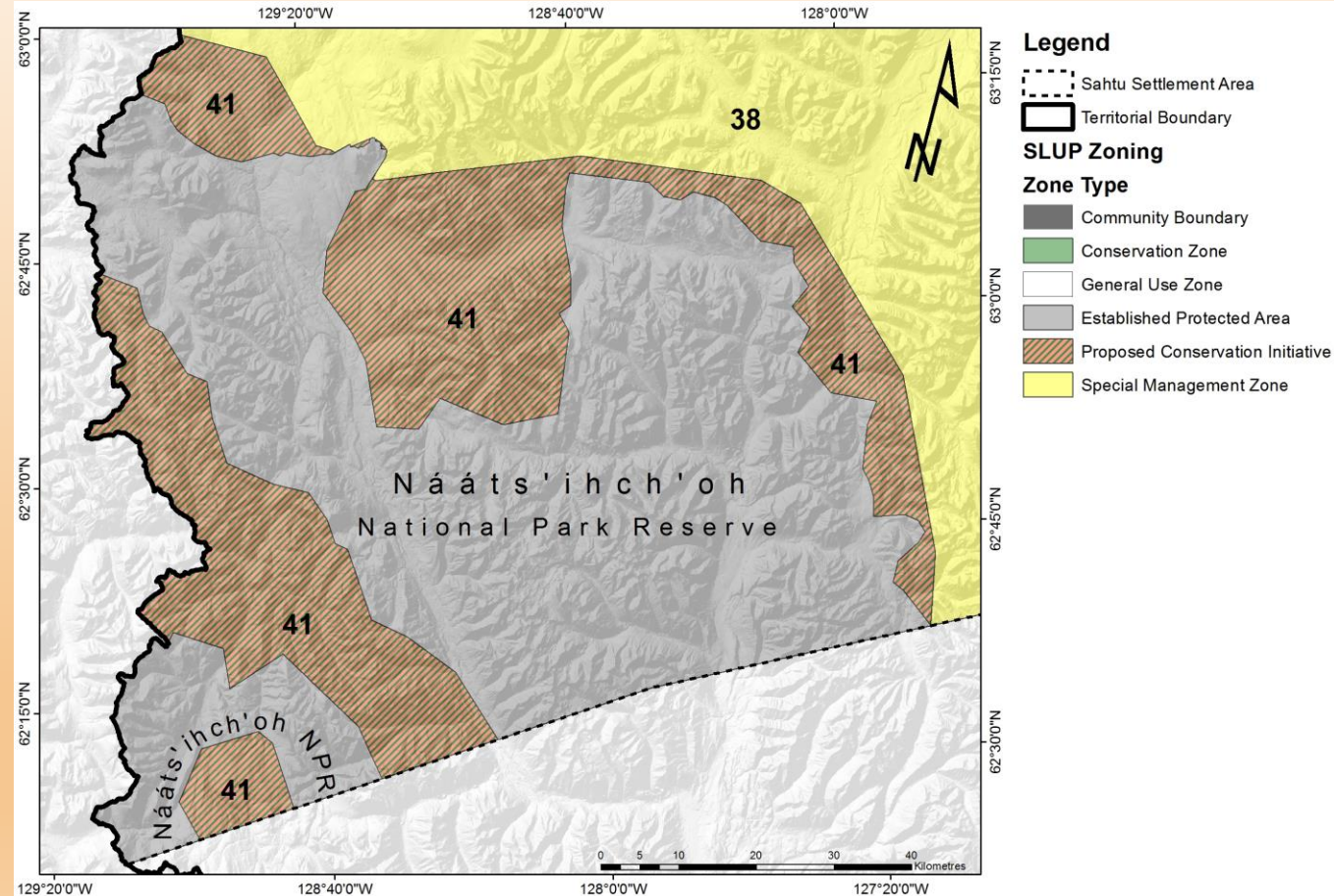
Sahtu Land Use Plan Zoning

Timeframe: August 8, 2013 – December 16, 2014



Sahtu Land Use Plan Zoning

Timeframe: December 16, 2014 – Present



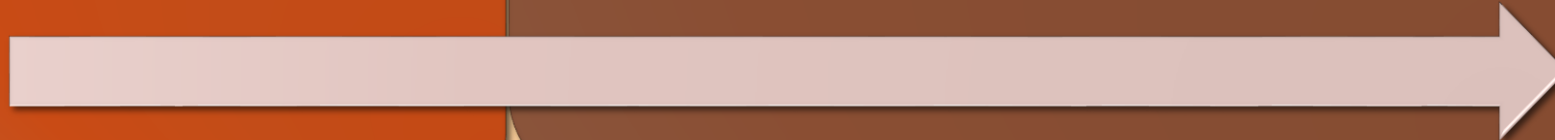
Timeline



- **Information gathering**
- **Background Report**
(April 17, 2015)

Public Comments Received:

- **Wildlife Conservation Society Canada** (June 16, 2015)
- **Canadian Parks and Wilderness Society** (June 16, 2015)
- **Parks Canada Agency** (June 16, 2015)
- **NWT & Nunavut Chamber of Mines** (June 16, 2015)
- **Government of Canada- AANDC** (June 17, 2015)
- **Government of the Northwest Territories- Lands** (June 17, 2015)
- **Sahtú Renewable Resources Board** (June 29, 2015)
- **Tulita District Land Corporation** (February 2, 2016)



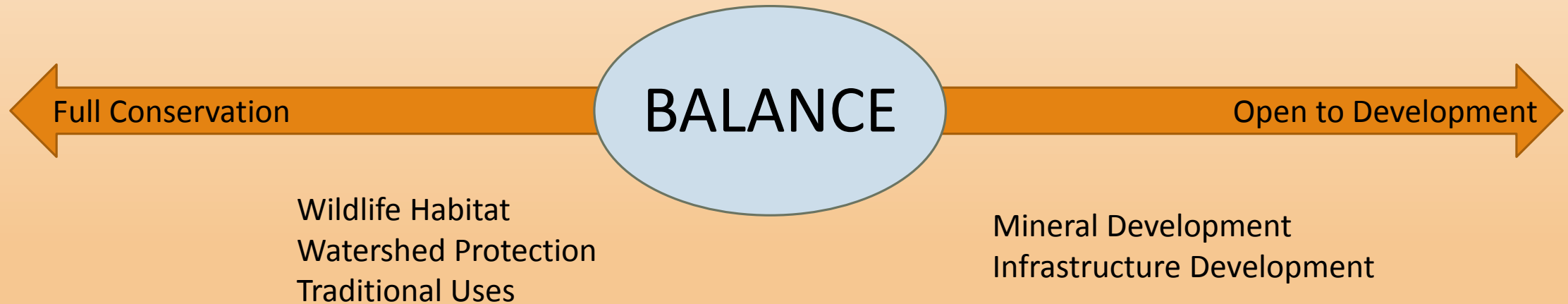
Timeline



What the Board Heard

Through public comments submitted in writing and raised during the public meetings the Board received a range of input, with rationale, from protecting the PCI lands to opening the PCI lands up for development.

The Board's direction was to seek a "Balanced Approach" through zoning.



Timeline



Draft Amendment Application
- Distributed to approval parties (October 7, 2015)

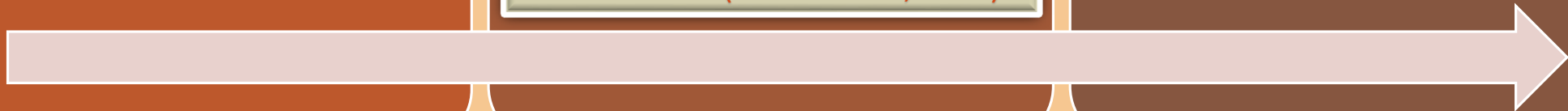


Letters from approval parties requesting extension for Draft Amendment Application review

GNWT- Lands (November 27, 2015)
Canada- INAC (December 8, 2015)



Sahtu Land Use Planning Board response to review extension, granting 60 calendar days (December 17, 2015)



Timeline

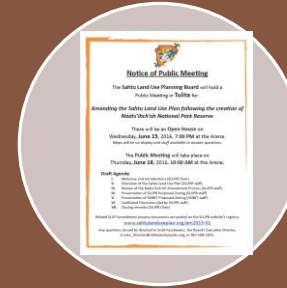


Draft SLUP Amendment posted to on-line registry
(December 17, 2015)

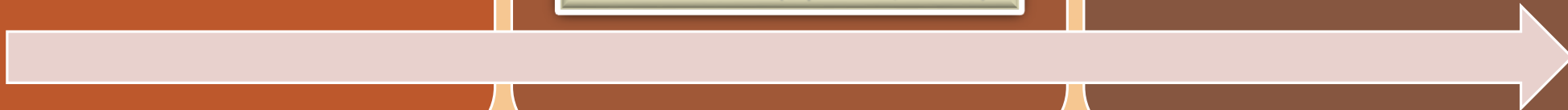


DRAFT SLUP Amendment Application Review received from approval parties

GNWT- Lands (March 8, 2016)
Canada- INAC (April 29, 2016)



Notice of Public Meeting in Tulita sent out
(May 9, 2016)



Timeline- Next Steps

The SLUPB is seeking direction through this public meeting to advance the amendment process.

The SLUPB's and GNWT's proposed zoning is presented to continue the conversation.

Following this meeting the SLUPB will review the input given and consider next steps.

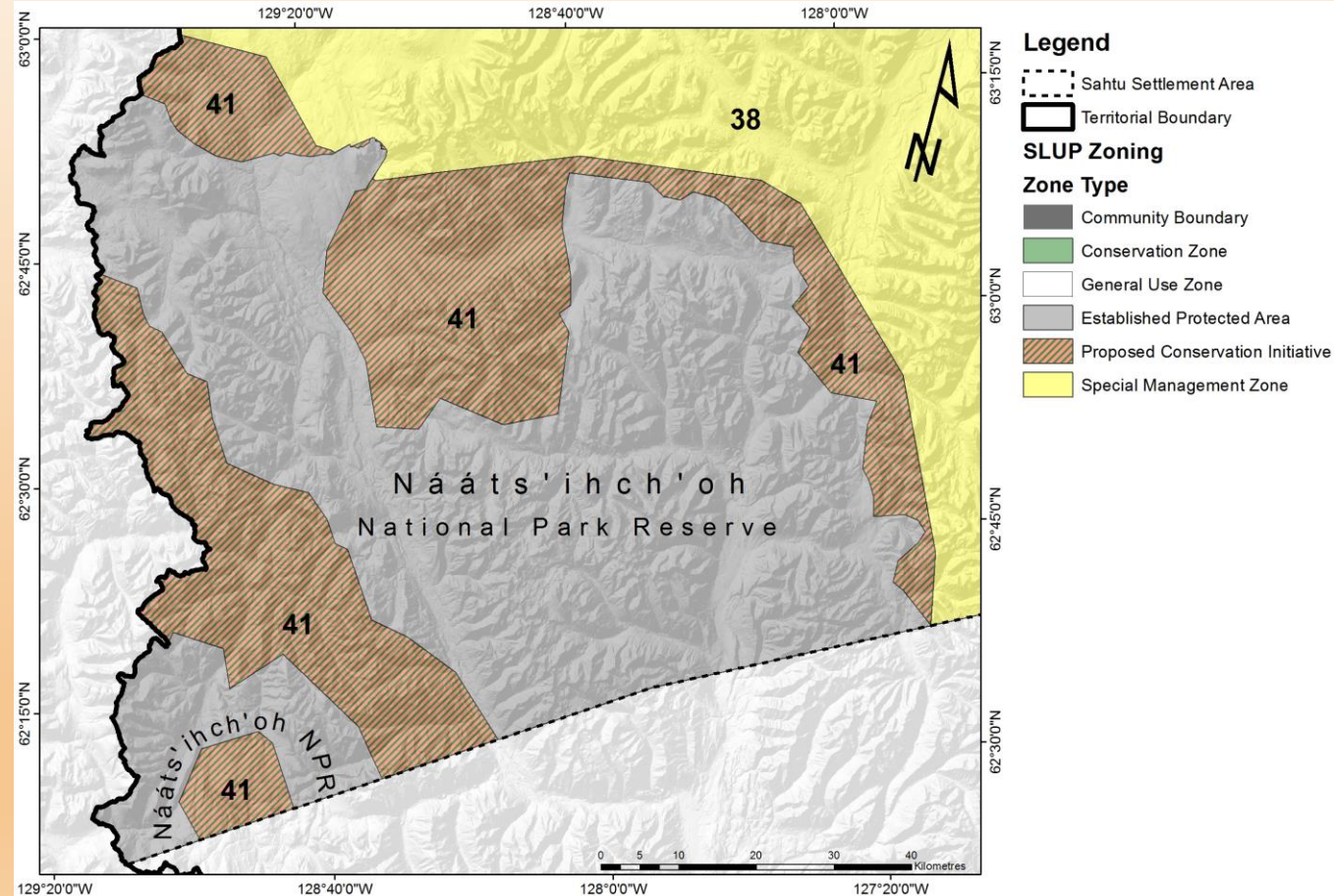
The Plan's zoning will remain in effect until an amendment is adopted by the SLUPB and then approved by:

- Sahtu Secretariat Incorporated
- Government of the Northwest Territories
- Government of Canada

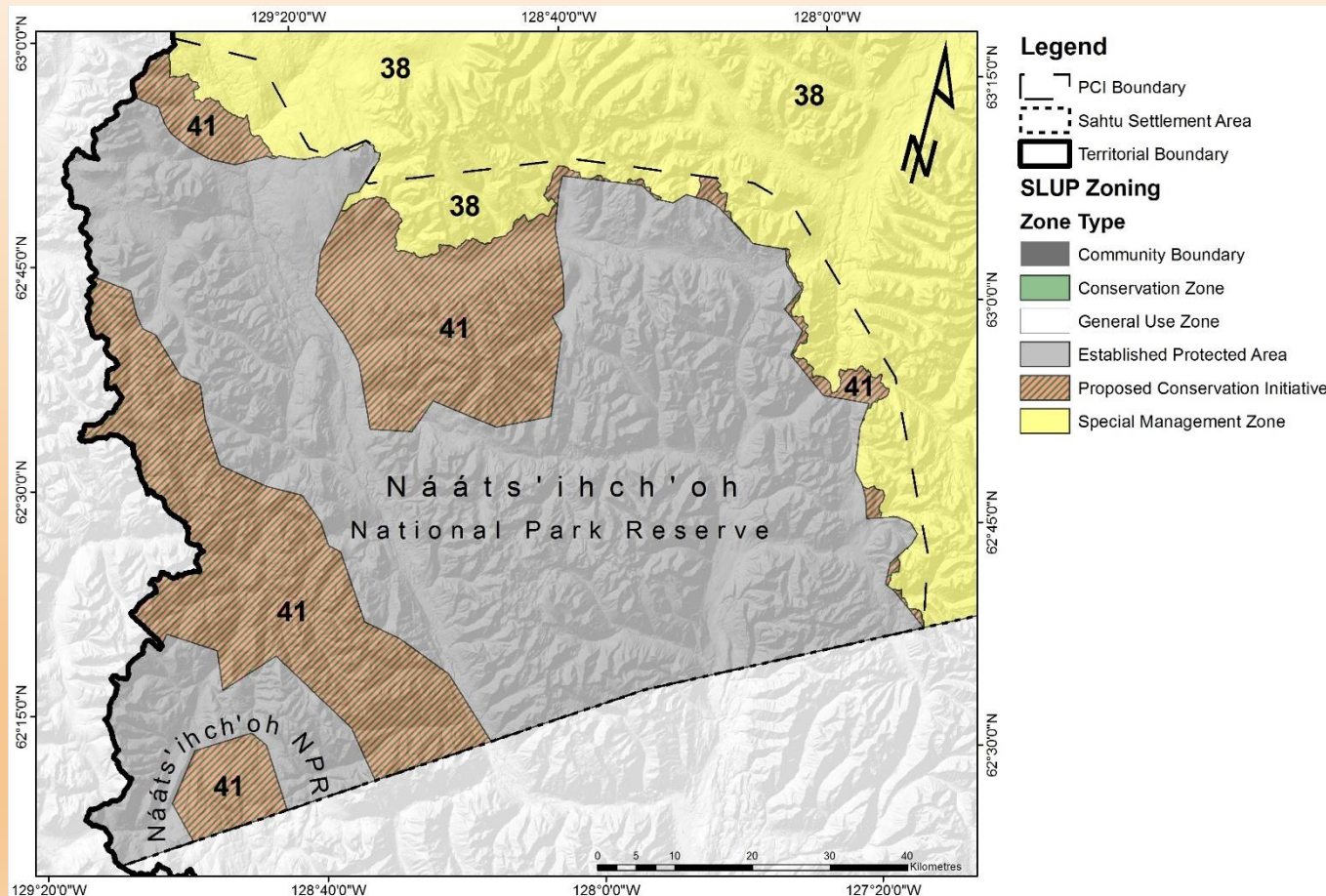
Presentation of SLUPB Proposed Zoning

Sahtu Land Use Plan Zoning

Timeframe: December 16, 2014 – Present



SLUPB Proposed Zoning



Zone 38- Mackenzie Mountains SMZ

Special Values:

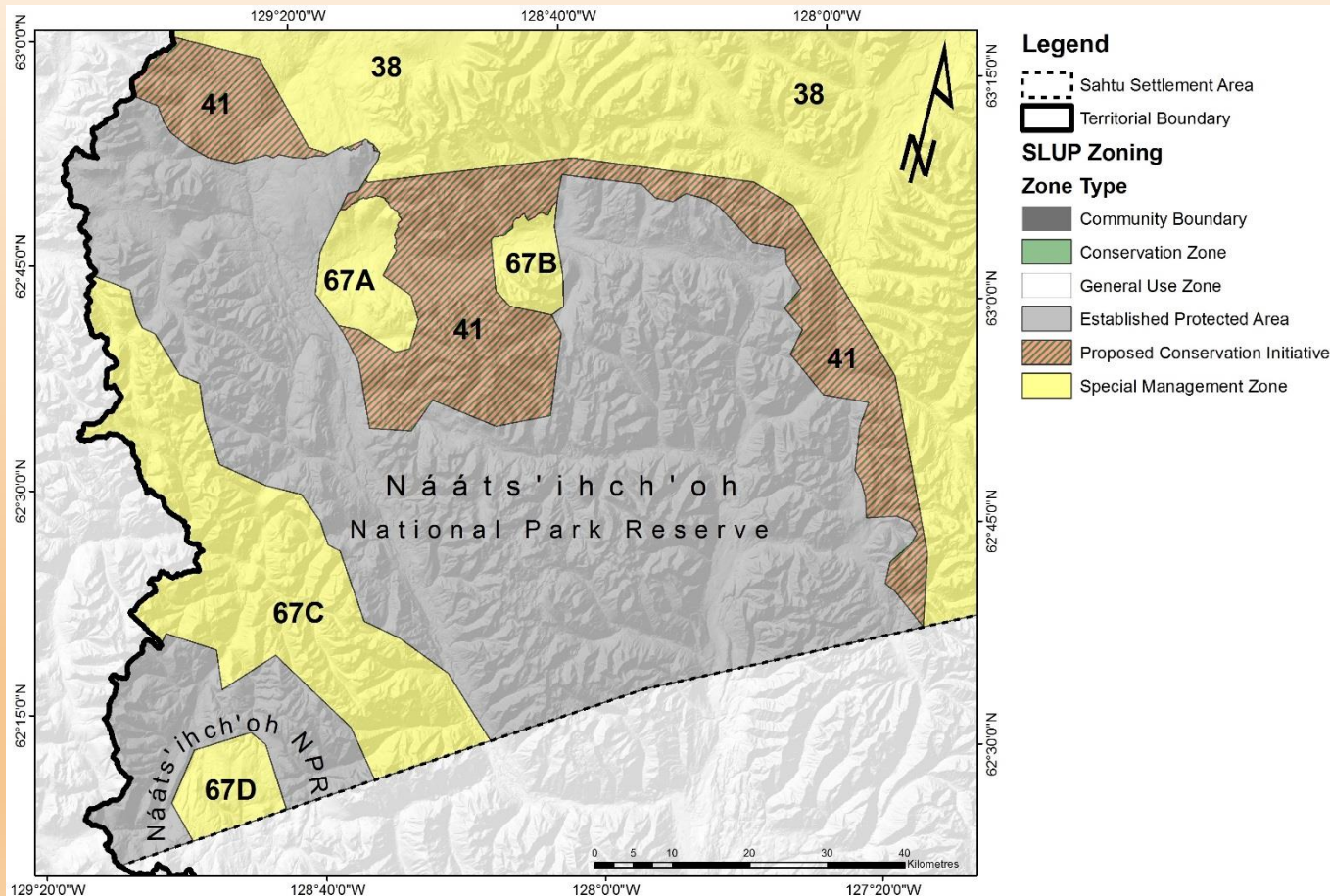
Protected: Archaeological, burial, cultural and heritage sites.

Respected: Wildlife habitat and hunting areas (Mountain goats, Dall's sheep, Woodland caribou, Moose, Bear, fish, waterfowl, migratory birds), Ecologically significant features (karst, mineral licks, salt springs, glacial refugia, eskers, may-be-at-risk plants)

Take into account: Camps, cabins, tent sites, traditional trails.

Economic Importance: Known mineralization, Outfitting, Existing Infrastructure.

SLUPB Proposed Zoning



Zone 67- Nááts'ihch'oh SMZ

Special Values:

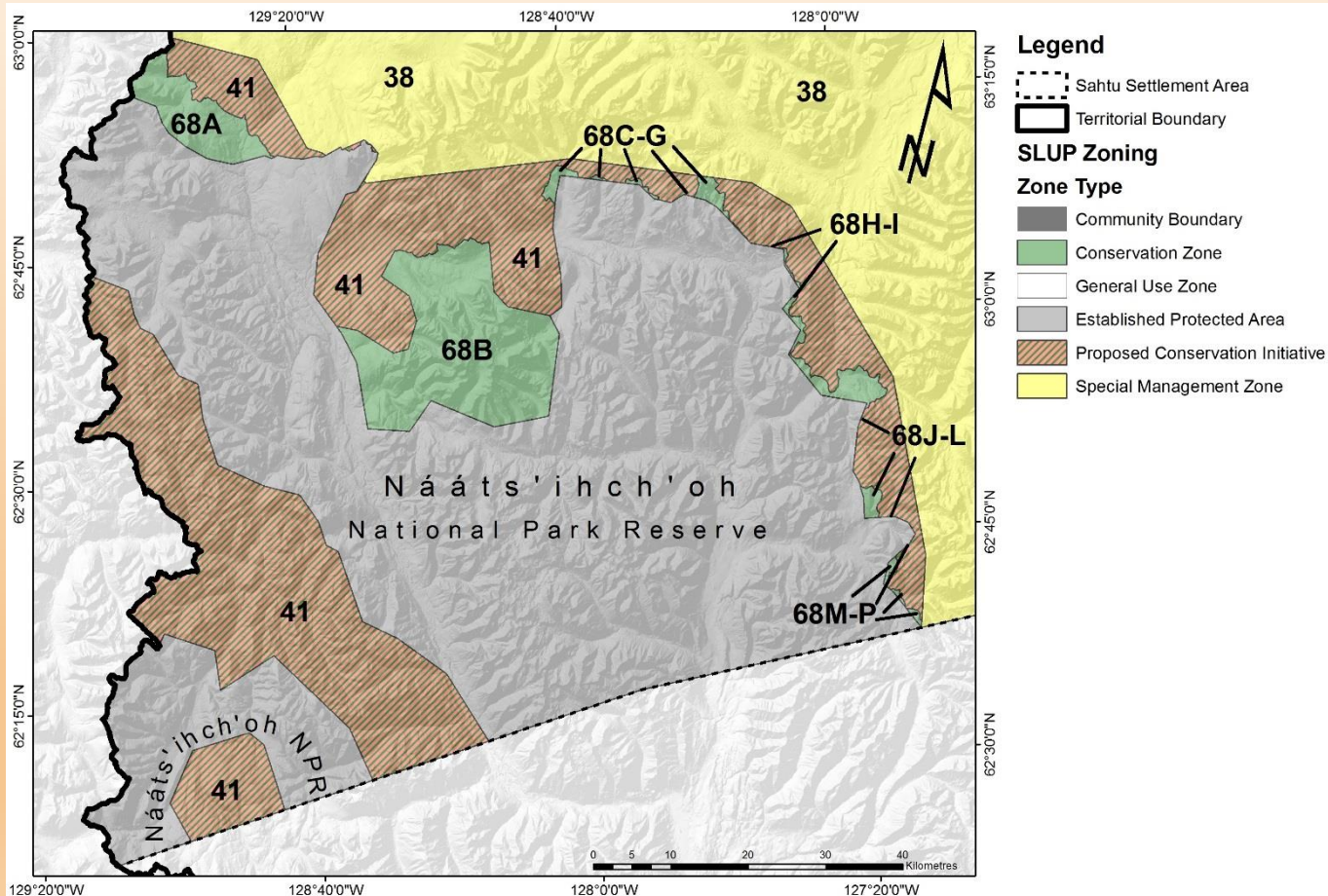
Protected: Archaeological, burial, cultural and heritage sites

Respected: Wildlife habitat and hunting areas (Dall's sheep, mountain woodland caribou, grizzly bear)

Take into account: Recreation areas.

Economic Importance: Known mineralization, existing Infrastructure, adjacent to NANPR.

SLUPB Proposed Zoning



Zone 68- Nááts'ihch'oh CZ

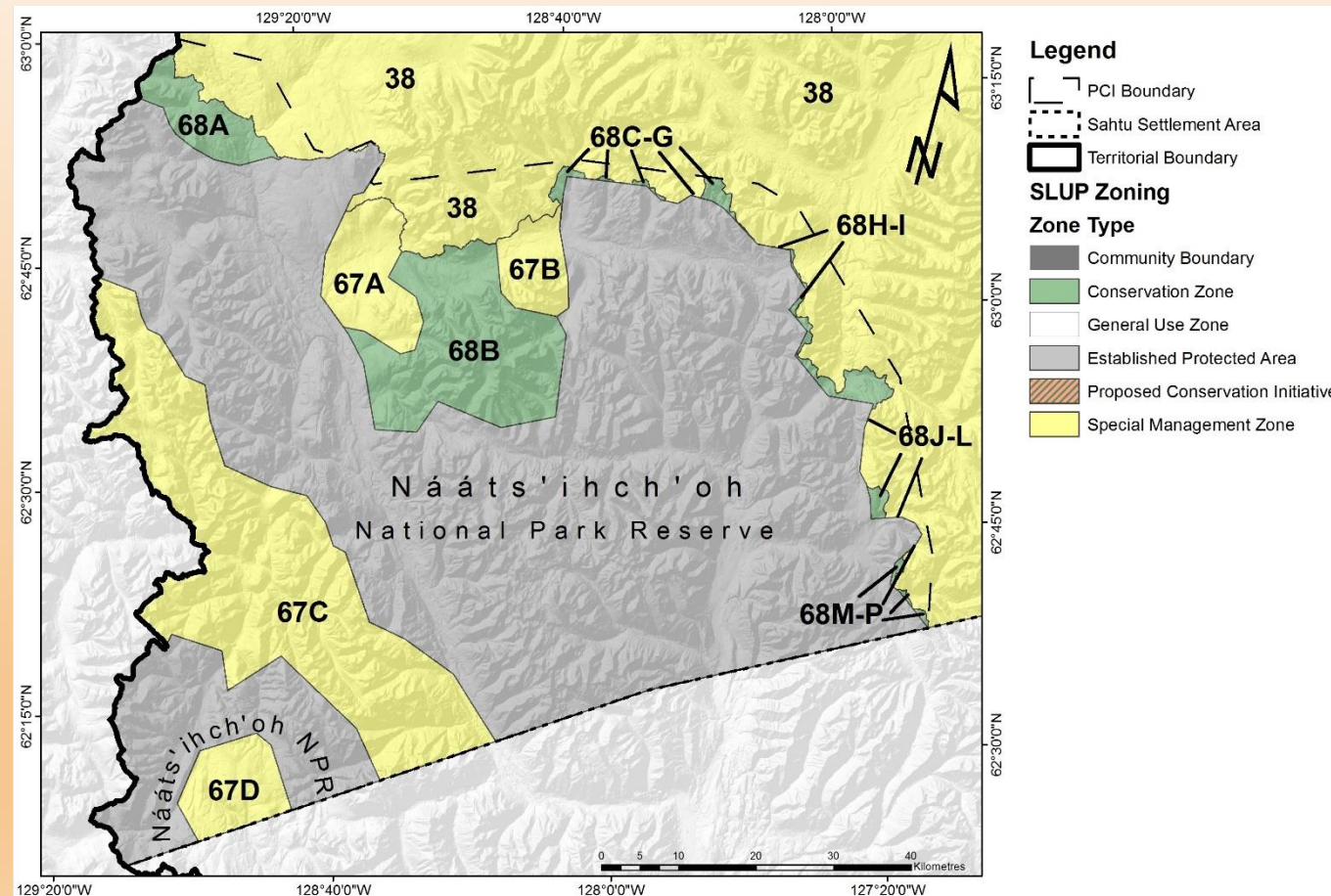
Special Values:

Protected: Archaeological, Burial, and cultural sites. Headwater tributaries of the South Nahanni River Watershed. Wildlife Habitat (Grizzly Bear, Mountain Woodland Caribou)

Respected: Recreation Areas

Economic Importance: Known mineralization, adjacent to NANPR.

Sahtu Land Use Plan Proposed Zoning

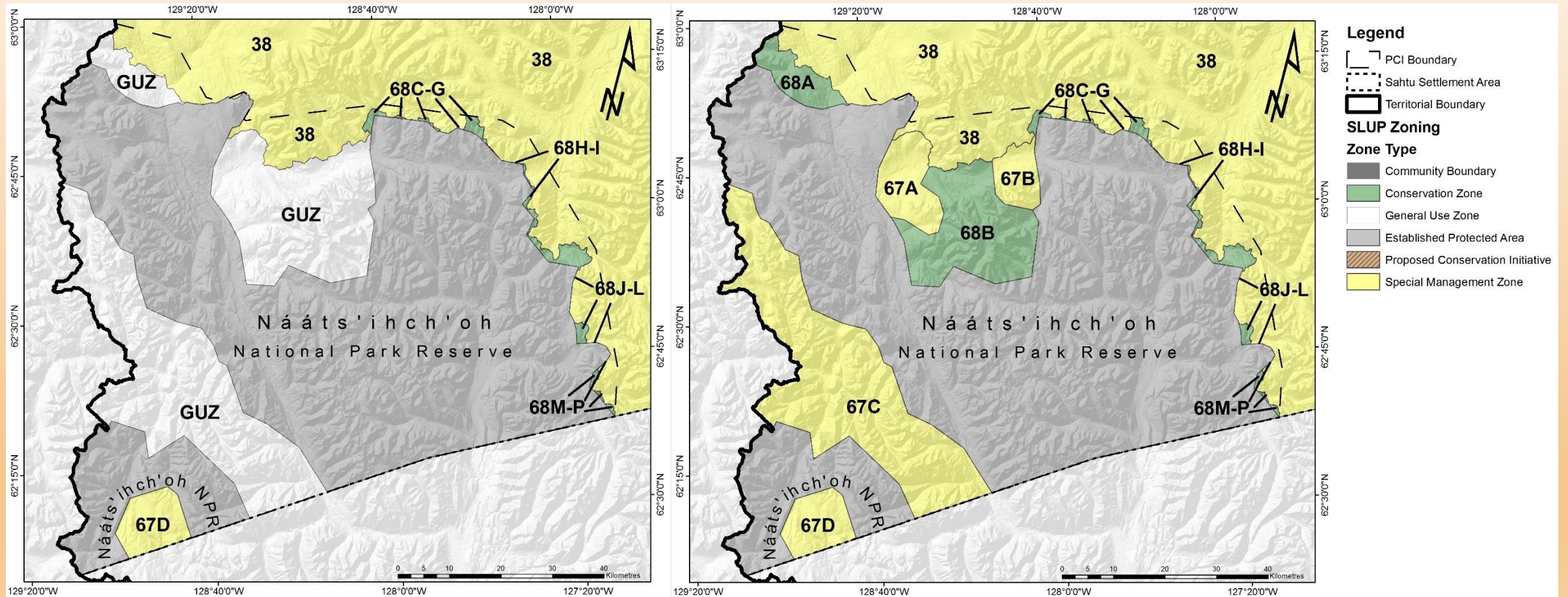


Presentation of GNWT Proposed Zoning

GNWT STAFF

Discussion

Proposed Zoning



MAHSI



www.sahtulanduseplan.org