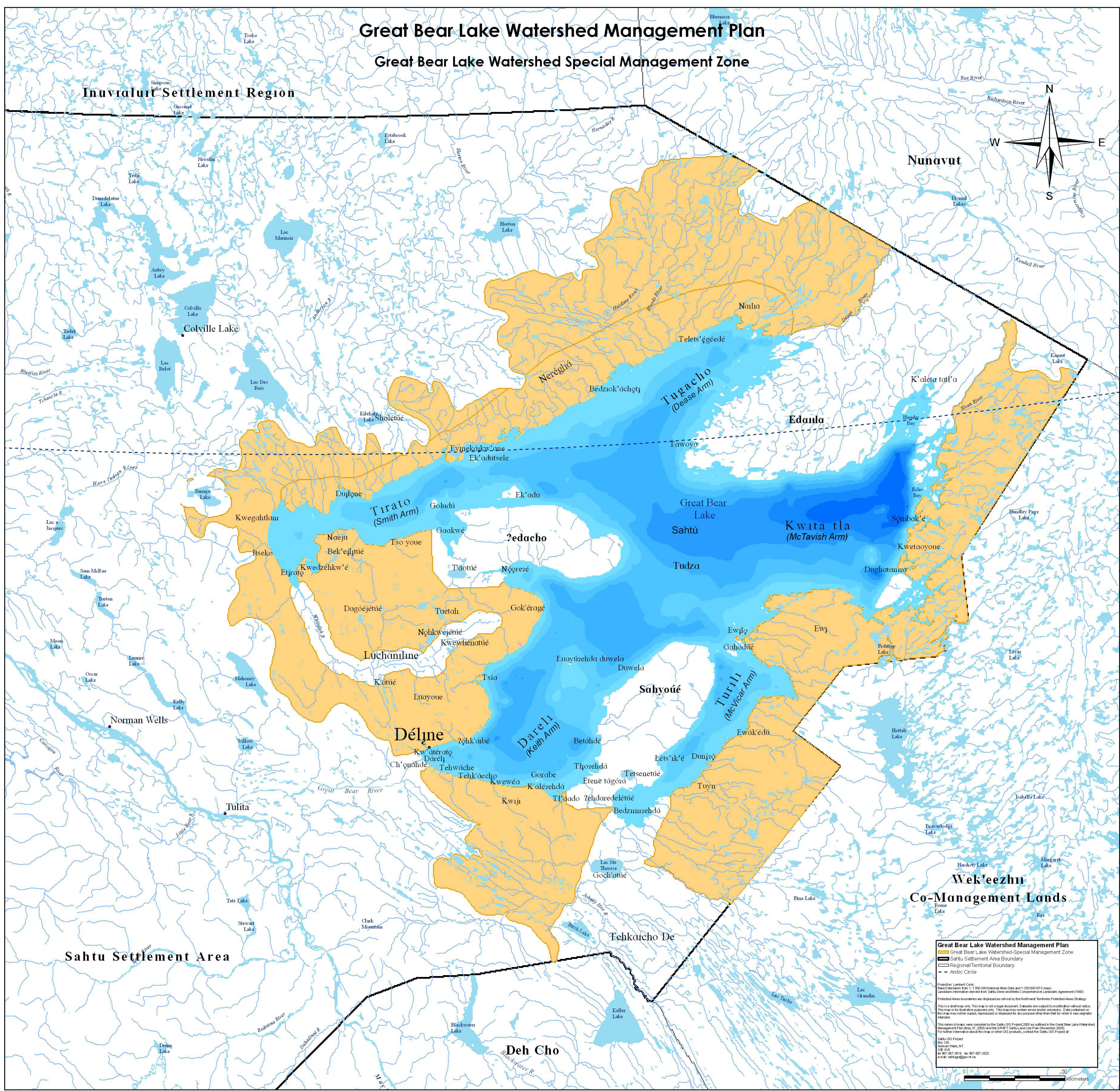


Great Bear Lake Watershed Management Plan

Great Bear Lake Watershed Special Management Zone



Great Bear Lake Watershed Management Plan

- Great Bear Lake Watershed-Special Management Zone
- Sahtu Settlement Area Boundary
- Regional/Territorial Boundary
- Arctic Circle

Projection: Lambert Conic
Base Data taken from 1:100,000 National Atlas Data and 1:250,000 NTS maps
Land Use information derived from Sahtu, Inuvialuit and Nunavut Land Claims Agreements (1993)
Protected Areas boundaries are displayed as set out by the Northwest Territories Protected Areas Strategy
This is a draft map only. This map is not a legal document. Disputes are subject to modification without notice.
This map is for illustrative purposes only. This map may contain errors and/or omissions. Data contained on this map may not be copied, reproduced or displayed for any purpose other than that for which it was originally intended.
This series of maps were consulted for the Sahtu OVS Project 2005 as included in the Great Bear Lake Watershed Management Plan (May 31, 2005) and the DRAFT Sahtu Land Use Plan (November 2005).
For further information about this map or other OVS products, contact the Sahtu OVS Project at:
Sahtu OVS Project
Box 100
Norman Wells, NT
X0E 0V0
Tel: 867-569-3515 Fax: 867-567-3525
e-mail: sahtuovs@gov.nt.ca

0 50 Kilometers