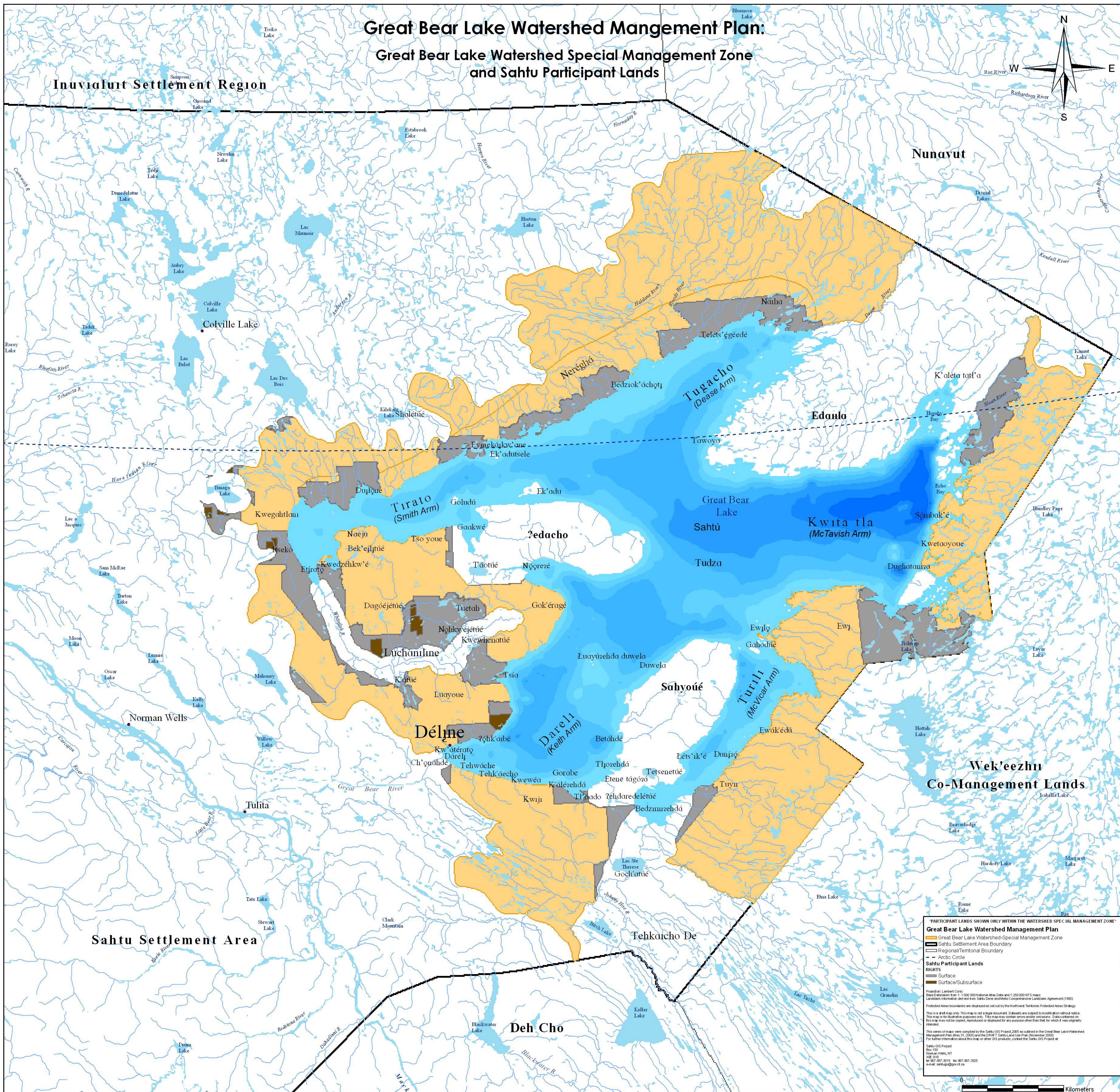


Great Bear Lake Watershed Management Plan:

Great Bear Lake Watershed Special Management Zone and Sahtu Participant Lands



"PARTICIPANT LANDS SHOWN ONLY WITHIN THE WATERSHED SPECIAL MANAGEMENT ZONE"

Great Bear Lake Watershed Management Plan

- Great Bear Lake Watershed-Special Management Zone
- Sahtu Settlement Area Boundary
- Regional/Territorial Boundary
- Arctic Circle
- Sahtu Participant Lands

RIGHTS

- Surface
- Surface/Subsurface

Projection: Lambert Conformal Conic
Scale: 1:1,000,000 National Atlas Data and 1:250,000 NT S maps
Landmark information derived from Sahtu Dene and Métis Comprehensive Landclaim Agreement (1993)
Protected Areas boundaries are displayed as set out by the Northwest Territories Protected Areas Strategy
This is a draft map only. This map is not a legal document. Datasets are subject to modification without notice.
This map is for illustrative purposes only. This map may contain errors and omissions. Data contained on this map may not be copied, reproduced or displayed for any purpose other than that for which it was originally intended.
This series of maps were compiled by the Sahtu GIS Project, 2005 as outlined in the Great Bear Lake Watershed Management Plan (May 31, 2005) and the DRAFT Sahtu Land Use Plan (December 2005).
For further information about this map or other GIS products, contact the Sahtu GIS Project at:
Sahtu GIS Project
Box 150
Norman Wells, NT
X0E 0V0
Tel: 867-987-3619 Fax: 867-987-3225
e-mail: sahtugis@govt.ca

0 Kilometers