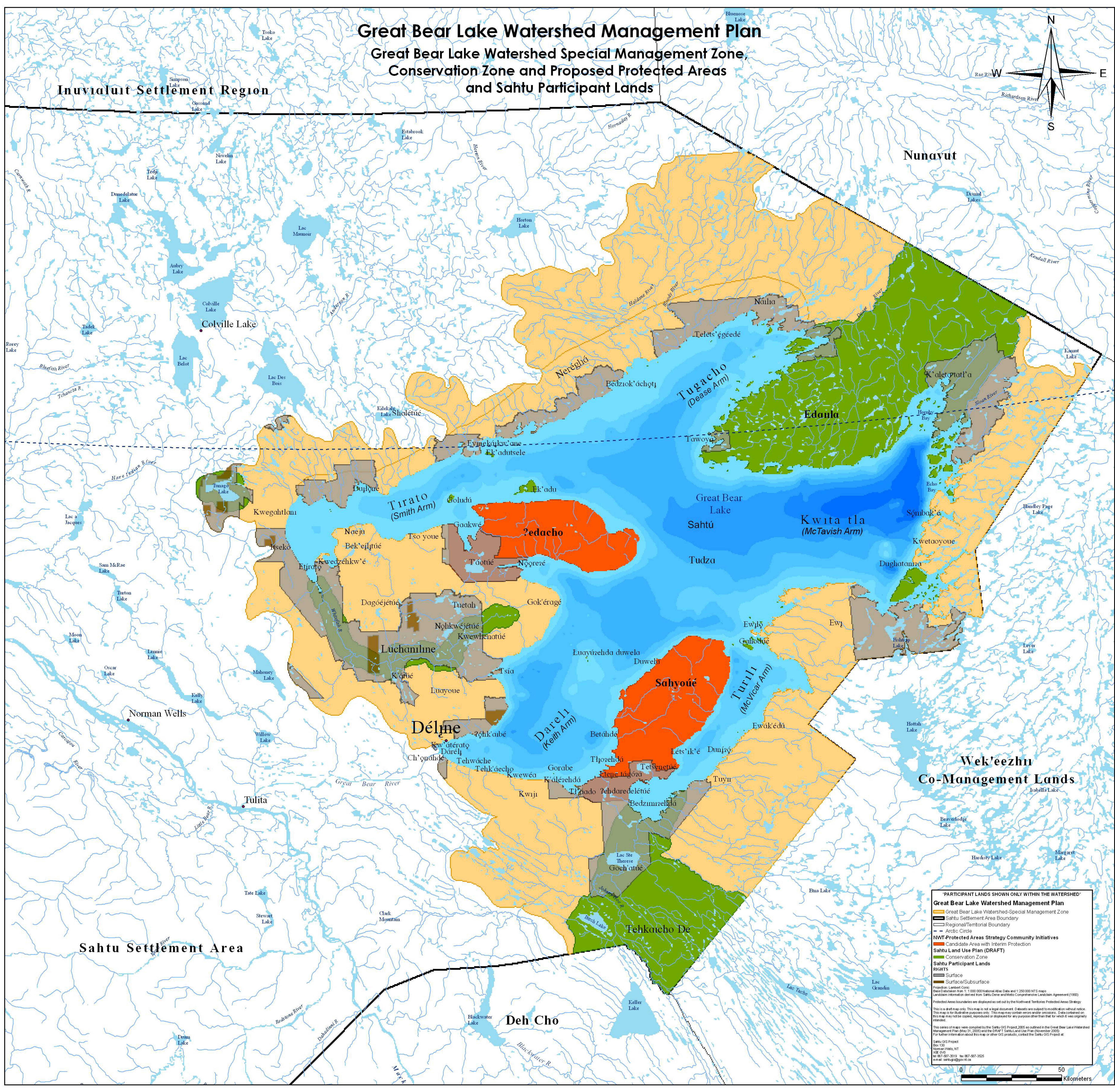
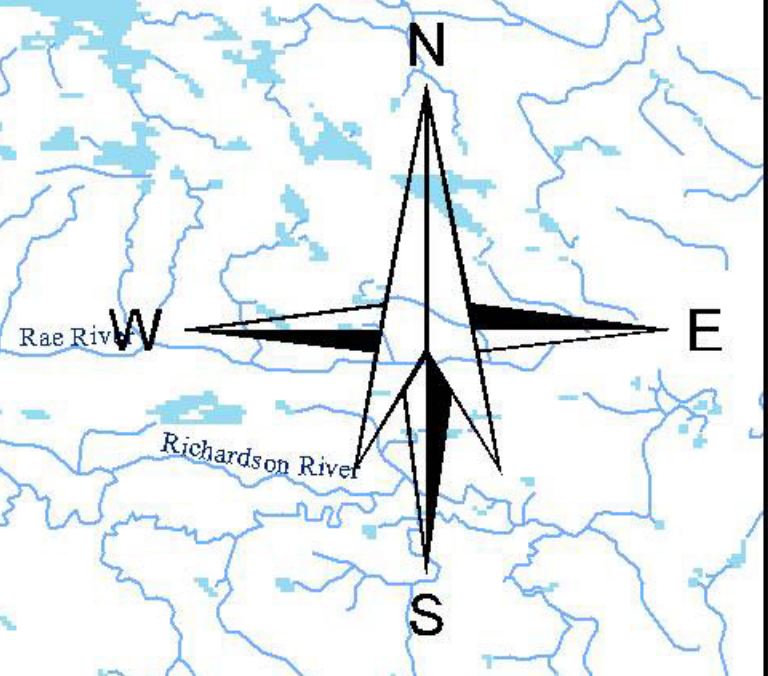


Great Bear Lake Watershed Management Plan

Great Bear Lake Watershed Special Management Zone, Conservation Zone and Proposed Protected Areas and Sahtu Participant Lands



PARTICIPANT LANDS SHOWN ONLY WITHIN THE WATERSHED

Great Bear Lake Watershed Management Plan

- Great Bear Lake Watershed-Special Management Zone
- Sahtu Settlement Area Boundary
- Regional/Territorial Boundary
- Arctic Circle

NWT-Protected Areas Strategy Community Initiatives

- Candidate Area with Interim Protection
- Sahtu Land Use Plan (DRAFT)
- Conservation Zone

Sahtu Participant Lands

RIGHTS

- Surface
- Surface/Subsurface

Projection: Lambert Conic
Data Calculated from 1:1,000,000 National Atlas Data and 1:250,000 NTS maps
Landmark information derived from Sahtu Land Use Plan and the Northern Landmark Agreement (1993)
Protected Areas boundaries are displayed as set out by the Northwest Territories Protected Areas Strategy
This is a draft map only. This map is not a legal document. Datasets are subject to modification without notice.
This map is for illustrative purposes only. This map may contain errors and/or omissions. Data contained on this map may not be copied, reproduced or displayed for any purpose other than that for which it was originally intended.
This series of maps were compiled by the Sahtu GIS Project 2005 as outlined in the Great Bear Lake Watershed Management Plan May 21, 2005 and the Sahtu Land Use Plan (November 2005).
For further information about this map or other GIS products, contact the Sahtu GIS Project at:
Sahtu GIS Project
Box 20
Norman Wells, NT
X0E 0V0
Tel: (867) 967-3525 Fax: (867) 967-3525
Email: sahtugis@gov.nt.ca

