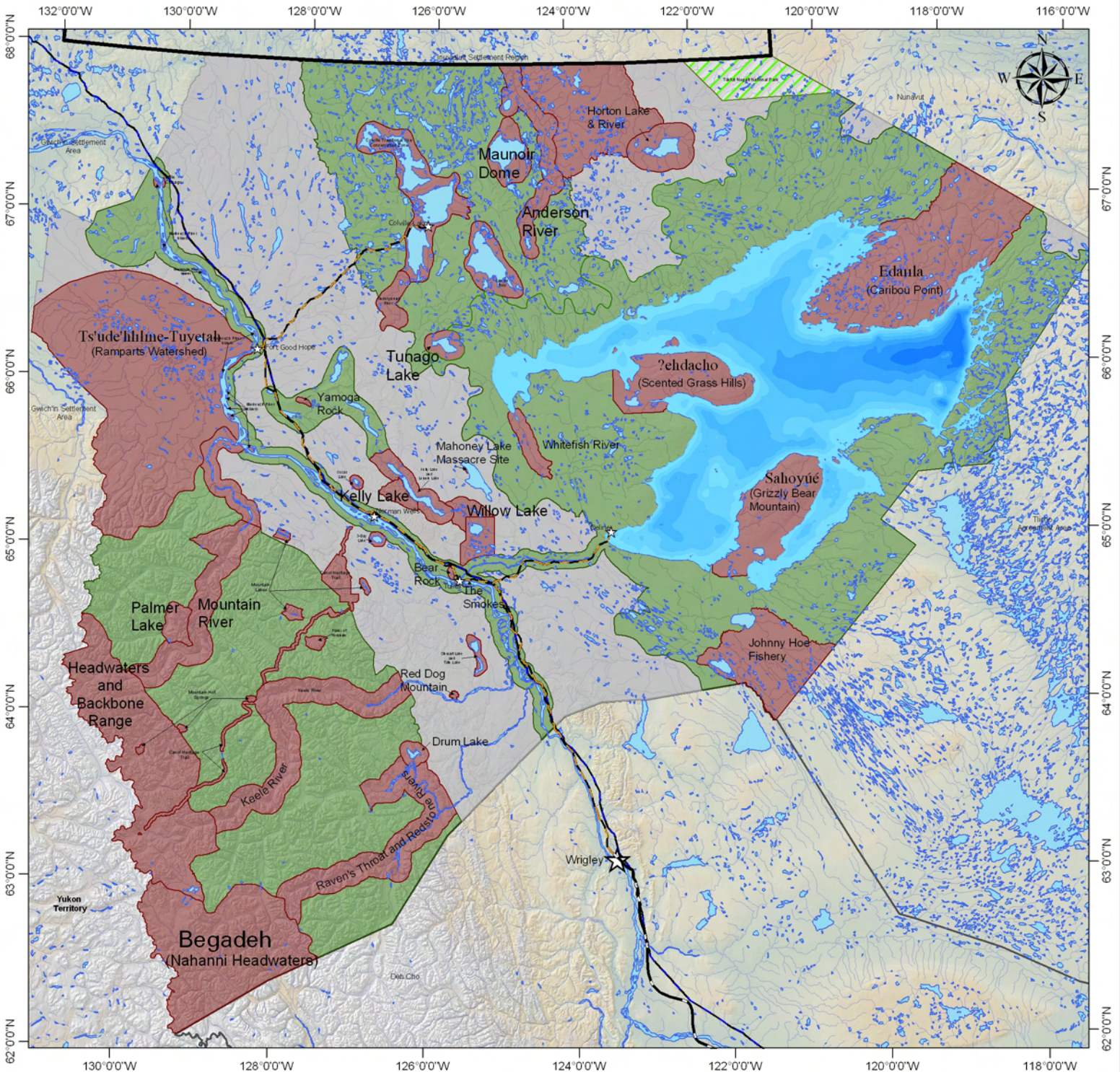


Sahtu Land Use Plan, Discussion Draft, August 2007



SLUP Discussion Draft, August 2007

- Draft Conservation Zone: 27% (Previously 30%)
- Special Management Zone: 49% (Previously 59%)
- Multiple Use Zone: 24% (Previously 11%)

Projection: Lambert Conic
 Base Data taken from 1:1 000 000 National Atlas Data and 1:250 000 NTS Maps
 Land Claim information derived from Sahtu Dene and Metis Comprehensive Land Claim Agreement
 Draft conservation zones supplied by the Sahtu Land Use Planning Board

Percent Area calculations = (area of zone land + water / total sahtu land+water) x 100
 Tuklut Nogot National Park is included in the area calculations

This is a DRAFT MAP ONLY. This map is not a legal document. Datasets are subject to modification without notice. This map is for illustrative purposes only. This map may contain errors and/or omissions. Data contained on this map may not be copied, reproduced, or displayed for any purpose other than for which it was originally intended.

This map was developed by the Sahtu Land Use Planning Board and the Sahtu GIS Project, 2007. For further information about this map or other GIS products, contact the Sahtu GIS Project at:

Sahtu GIS Project, Box 130
 Norman Wells, NT X2E 0V0
 Tel: (867) 587-3519 Fax: (867) 587-3525
 e-mail: sahtugis@gov.nt.ca

SAHTU GIS PROJECT

